

CRYZL1 Antibody (C-term)
Affinity Purified Rabbit Polyclonal Antibody (Pab)
Catalog # AP17138b

Specification

CRYZL1 Antibody (C-term) - Product Information

Application	WB,E
Primary Accession	O95825
Other Accession	Q59A28 , NP_665857.2
Reactivity	Human
Predicted	Bovine
Host	Rabbit
Clonality	Polyclonal
Isotype	Rabbit IgG
Calculated MW	38697
Antigen Region	296-323

CRYZL1 Antibody (C-term) - Additional Information

Gene ID 9946

Other Names

Quinone oxidoreductase-like protein 1, 1---, Protein 4P11, Quinone oxidoreductase homolog 1, QOH-1, Zeta-crystallin homolog, CRYZL1, 4P11

Target/Specificity

This CRYZL1 antibody is generated from rabbits immunized with a KLH conjugated synthetic peptide between 296-323 amino acids from the C-terminal region of human CRYZL1.

Dilution

WB~~1:1000

Format

Purified polyclonal antibody supplied in PBS with 0.09% (W/V) sodium azide. This antibody is purified through a protein A column, followed by peptide affinity purification.

Storage

Maintain refrigerated at 2-8°C for up to 2 weeks. For long term storage store at -20°C in small aliquots to prevent freeze-thaw cycles.

Precautions

CRYZL1 Antibody (C-term) is for research use only and not for use in diagnostic or therapeutic procedures.

CRYZL1 Antibody (C-term) - Protein Information

Name CRYZL1

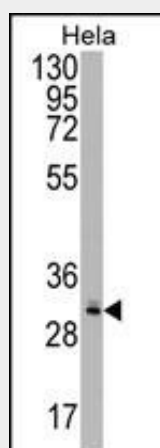
Synonyms 4P11**Tissue Location**

Ubiquitous.

CRYZL1 Antibody (C-term) - Protocols

Provided below are standard protocols that you may find useful for product applications.

- [Western Blot](#)
- [Blocking Peptides](#)
- [Dot Blot](#)
- [Immunohistochemistry](#)
- [Immunofluorescence](#)
- [Immunoprecipitation](#)
- [Flow Cytometry](#)
- [Cell Culture](#)

CRYZL1 Antibody (C-term) - Images

CRYZL1 Antibody (C-term) (Cat. #AP17138b) western blot analysis in HeLa cell line lysates (35ug/lane). This demonstrates the CRYZL1 antibody detected the CRYZL1 protein (arrow).

CRYZL1 Antibody (C-term) - Background

This gene encodes a protein that has sequence similarity to zeta crystallin, also known as quinone oxidoreductase. This zeta crystallin-like protein also contains an NAD(P)H binding site. Alternatively spliced transcript variants have been observed but their full-length nature has not been completely determined.

CRYZL1 Antibody (C-term) - References

Fernandez, M.R., et al. Cell. Mol. Life Sci. 64(11):1419-1427(2007)
Hu, Y.H., et al. BMC Genomics 7, 155 (2006) :
Kim, M.Y., et al. Genomics 57(1):156-159(1999)