

PPP1R13B Antibody (Center)
Affinity Purified Rabbit Polyclonal Antibody (Pab)
Catalog # AP17200C

Specification

PPP1R13B Antibody (Center) - Product Information

Application	WB,E
Primary Accession	O96KQ4
Other Accession	NP_056131.2
Reactivity	Human
Host	Rabbit
Clonality	Polyclonal
Isotype	Rabbit IgG
Calculated MW	119565
Antigen Region	623-652

PPP1R13B Antibody (Center) - Additional Information

Gene ID 23368

Other Names

Apoptosis-stimulating of p53 protein 1, Protein phosphatase 1 regulatory subunit 13B, PPP1R13B, ASPP1, KIAA0771

Target/Specificity

This PPP1R13B antibody is generated from rabbits immunized with a KLH conjugated synthetic peptide between 623-652 amino acids from the Central region of human PPP1R13B.

Dilution

WB~~1:1000

Format

Purified polyclonal antibody supplied in PBS with 0.09% (W/V) sodium azide. This antibody is purified through a protein A column, followed by peptide affinity purification.

Storage

Maintain refrigerated at 2-8°C for up to 2 weeks. For long term storage store at -20°C in small aliquots to prevent freeze-thaw cycles.

Precautions

PPP1R13B Antibody (Center) is for research use only and not for use in diagnostic or therapeutic procedures.

PPP1R13B Antibody (Center) - Protein Information

Name PPP1R13B

Synonyms ASPP1, KIAA0771

Function Regulator that plays a central role in regulation of apoptosis via its interaction with p53/TP53 (PubMed:[11684014](#), PubMed:[12524540](#)). Regulates TP53 by enhancing the DNA binding and transactivation function of TP53 on the promoters of proapoptotic genes in vivo.

Cellular Location

Cytoplasm. Nucleus. Note=Predominantly cytoplasmic. Some fraction is nuclear

Tissue Location

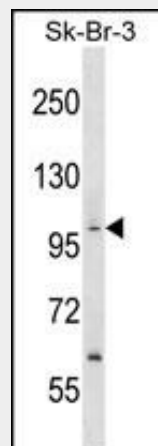
Reduced expression in breast carcinomas expressing a wild-type TP53 protein.

PPP1R13B Antibody (Center) - Protocols

Provided below are standard protocols that you may find useful for product applications.

- [Western Blot](#)
- [Blocking Peptides](#)
- [Dot Blot](#)
- [Immunohistochemistry](#)
- [Immunofluorescence](#)
- [Immunoprecipitation](#)
- [Flow Cytometry](#)
- [Cell Culture](#)

PPP1R13B Antibody (Center) - Images



PPP1R13B Antibody (Center) (Cat. #AP17200c) western blot analysis in SK-BR-3 cell line lysates (35ug/lane). This demonstrates the PPP1R13B antibody detected the PPP1R13B protein (arrow).

PPP1R13B Antibody (Center) - Background

This gene encodes a member of the ASPP (apoptosis-stimulating protein of p53) family of p53 interacting proteins. The protein contains four ankyrin repeats and an SH3 domain involved in protein-protein interactions. ASPP proteins are required for the induction of apoptosis by p53-family proteins. They promote DNA binding and transactivation of p53-family proteins on the promoters of proapoptotic genes. Expression of this gene is regulated by the E2F transcription factor.

PPP1R13B Antibody (Center) - References

Figl, A., et al. Mutat. Res. 702(1):8-16(2010)
Rose, J.E., et al. Mol. Med. 16 (7-8), 247-253 (2010) :
Zhao, J., et al. Hepatology 51(1):142-153(2010)
Agirre, X., et al. Oncogene 25(13):1862-1870(2006)
Liu, Z.J., et al. Biochim. Biophys. Acta 1756(1):77-80(2005)