

DCP1A Antibody (N-term)
Affinity Purified Rabbit Polyclonal Antibody (Pab)
Catalog # AP17207a

Specification

DCP1A Antibody (N-term) - Product Information

Application	WB,E
Primary Accession	O9NPI6
Other Accession	NP_060873.4
Reactivity	Human
Host	Rabbit
Clonality	Polyclonal
Isotype	Rabbit IgG
Calculated MW	63278
Antigen Region	146-175

DCP1A Antibody (N-term) - Additional Information

Gene ID 55802

Other Names

mRNA-decapping enzyme 1A, 3---, Smad4-interacting transcriptional co-activator, Transcription factor SMIF, DCP1A, SMIF

Target/Specificity

This DCP1A antibody is generated from rabbits immunized with a KLH conjugated synthetic peptide between 146-175 amino acids from the N-terminal region of human DCP1A.

Dilution

WB~~1:1000

Format

Purified polyclonal antibody supplied in PBS with 0.09% (W/V) sodium azide. This antibody is purified through a protein A column, followed by peptide affinity purification.

Storage

Maintain refrigerated at 2-8°C for up to 2 weeks. For long term storage store at -20°C in small aliquots to prevent freeze-thaw cycles.

Precautions

DCP1A Antibody (N-term) is for research use only and not for use in diagnostic or therapeutic procedures.

DCP1A Antibody (N-term) - Protein Information

Name DCP1A

Synonyms SMIF

Function Necessary for the degradation of mRNAs, both in normal mRNA turnover and in nonsense-mediated mRNA decay (PubMed:[12417715](#)). Removes the 7-methyl guanine cap structure from mRNA molecules, yielding a 5'- phosphorylated mRNA fragment and 7m-GDP (PubMed:[12417715](#)). Contributes to the transactivation of target genes after stimulation by TGFB1 (PubMed:[11836524](#)). Essential for embryonic development (PubMed:[33813271](#)).

Cellular Location

Cytoplasm, P-body. Nucleus. Note=Co- localizes with NANOS3 in the processing bodies (By similarity) Predominantly cytoplasmic, in processing bodies (PB) (PubMed:16364915) Nuclear, after TGFB1 treatment. Translocation to the nucleus depends on interaction with SMAD4 (PubMed:11836524) {ECO:0000250|UniProtKB:Q91YD3, ECO:0000269|PubMed:11836524, ECO:0000269|PubMed:16364915}

Tissue Location

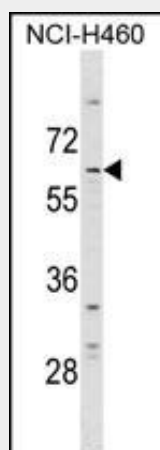
Detected in heart, brain, placenta, lung, skeletal muscle, liver, kidney and pancreas.

DCP1A Antibody (N-term) - Protocols

Provided below are standard protocols that you may find useful for product applications.

- [Western Blot](#)
- [Blocking Peptides](#)
- [Dot Blot](#)
- [Immunohistochemistry](#)
- [Immunofluorescence](#)
- [Immunoprecipitation](#)
- [Flow Cytometry](#)
- [Cell Culture](#)

DCP1A Antibody (N-term) - Images



DCP1A Antibody (N-term) (Cat. #AP17207a) western blot analysis in NCI-H460 cell line lysates (35ug/lane). This demonstrates the DCP1A antibody detected the DCP1A protein (arrow).

DCP1A Antibody (N-term) - Background

Necessary for the degradation of mRNAs, both in normal mRNA turnover and in nonsense-mediated mRNA decay. Removes the 7-methyl guanine cap structure from mRNA molecules, yielding a 5'-phosphorylated mRNA fragment and 7m-GDP. Contributes to the transactivation of target genes after stimulation by TGFB1.