

**UBE2V2 Antibody (Center)**  
**Affinity Purified Rabbit Polyclonal Antibody (Pab)**  
**Catalog # AP17212c****Specification**

---

**UBE2V2 Antibody (Center) - Product Information**

Application	WB,E
Primary Accession	<a href="#">Q15819</a>
Other Accession	<a href="#">Q7M767</a> , <a href="#">Q9D2M8</a> , <a href="#">Q3SZ43</a> , <a href="#">NP_003341.1</a>
Reactivity	Human
Predicted	Bovine, Mouse, Rat
Host	Rabbit
Clonality	Polyclonal
Isotype	Rabbit IgG
Calculated MW	16363
Antigen Region	75-104

**UBE2V2 Antibody (Center) - Additional Information****Gene ID** 7336**Other Names**

Ubiquitin-conjugating enzyme E2 variant 2, DDVit 1, Enterocyte differentiation-associated factor 1, EDAF-1, Enterocyte differentiation-promoting factor 1, EDPF-1, MMS2 homolog, Vitamin D3-inducible protein, UBE2V2, MMS2, UEV2

**Target/Specificity**

This UBE2V2 antibody is generated from rabbits immunized with a KLH conjugated synthetic peptide between 75-104 amino acids from the Central region of human UBE2V2.

**Dilution**

WB~~1:1000

**Format**

Purified polyclonal antibody supplied in PBS with 0.09% (W/V) sodium azide. This antibody is purified through a protein A column, followed by peptide affinity purification.

**Storage**

Maintain refrigerated at 2-8°C for up to 2 weeks. For long term storage store at -20°C in small aliquots to prevent freeze-thaw cycles.

**Precautions**

UBE2V2 Antibody (Center) is for research use only and not for use in diagnostic or therapeutic procedures.

**UBE2V2 Antibody (Center) - Protein Information****Name** UBE2V2

**Synonyms** MMS2, UEV2

**Function** Has no ubiquitin ligase activity on its own. The UBE2V2/UBE2N heterodimer catalyzes the synthesis of non-canonical poly-ubiquitin chains that are linked through 'Lys-63'. This type of poly- ubiquitination does not lead to protein degradation by the proteasome. Mediates transcriptional activation of target genes. Plays a role in the control of progress through the cell cycle and differentiation. Plays a role in the error-free DNA repair pathway and contributes to the survival of cells after DNA damage.

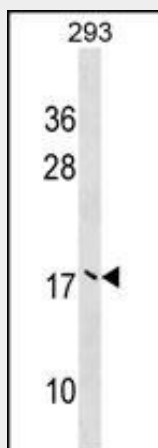
**Tissue Location**

Detected in placenta, colon, liver and skin. Detected at very low levels in most tissues

**UBE2V2 Antibody (Center) - Protocols**

Provided below are standard protocols that you may find useful for product applications.

- [Western Blot](#)
- [Blocking Peptides](#)
- [Dot Blot](#)
- [Immunohistochemistry](#)
- [Immunofluorescence](#)
- [Immunoprecipitation](#)
- [Flow Cytometry](#)
- [Cell Culture](#)

**UBE2V2 Antibody (Center) - Images**

UBE2V2 Antibody (Center) (Cat. #AP17212c) western blot analysis in 293 cell line lysates (35ug/lane). This demonstrates the UBE2V2 antibody detected the UBE2V2 protein (arrow).

**UBE2V2 Antibody (Center) - Background**

Ubiquitin-conjugating enzyme E2 variant proteins constitute a distinct subfamily within the E2 protein family. They have sequence similarity to other ubiquitin-conjugating enzymes but lack the conserved cysteine residue that is critical for the catalytic activity of E2s. The protein encoded by this gene also shares homology with ubiquitin-conjugating enzyme E2 variant 1 and yeast MMS2 gene product. It may be involved in the differentiation of monocytes and enterocytes.

**UBE2V2 Antibody (Center) - References**

Wen, R., et al. Plant Cell 20(1):213-227(2008)  
Brun, J., et al. BMC Mol. Biol. 9, 24 (2008) :  
Pastushok, L., et al. FEBS Lett. 581(28):5343-5348(2007)  
Zhao, G.Y., et al. Mol. Cell 25(5):663-675(2007)  
Wen, R., et al. Plant Mol. Biol. 61 (1-2), 241-253 (2006) :