

**KCNN1 Antibody (C-term)**  
**Affinity Purified Rabbit Polyclonal Antibody (Pab)**  
**Catalog # AP17223b****Specification**

---

**KCNN1 Antibody (C-term) - Product Information**

Application	WB,E
Primary Accession	<a href="#">O92952</a>
Other Accession	<a href="#">NP_002239.2</a>
Reactivity	Human
Host	Rabbit
Clonality	Polyclonal
Isotype	Rabbit IgG
Calculated MW	59987
Antigen Region	391-419

**KCNN1 Antibody (C-term) - Additional Information****Gene ID** 3780**Other Names**

Small conductance calcium-activated potassium channel protein 1, SK1, SKCa 1, SKCa1, KCa21, KCNN1, SK

**Target/Specificity**

This KCNN1 antibody is generated from rabbits immunized with a KLH conjugated synthetic peptide between 391-419 amino acids from the C-terminal region of human KCNN1.

**Dilution**

WB~~1:1000

**Format**

Purified polyclonal antibody supplied in PBS with 0.09% (W/V) sodium azide. This antibody is purified through a protein A column, followed by peptide affinity purification.

**Storage**

Maintain refrigerated at 2-8°C for up to 2 weeks. For long term storage store at -20°C in small aliquots to prevent freeze-thaw cycles.

**Precautions**

KCNN1 Antibody (C-term) is for research use only and not for use in diagnostic or therapeutic procedures.

**KCNN1 Antibody (C-term) - Protein Information****Name** KCNN1**Synonyms** SK

**Function** Forms a voltage-independent potassium channel activated by intracellular calcium (PubMed:[8781233](#), PubMed:[9287325](#), PubMed:[17142458](#)). Activation is followed by membrane hyperpolarization (By similarity). Thought to regulate neuronal excitability by contributing to the slow component of synaptic afterhyperpolarization (By similarity).

#### Cellular Location

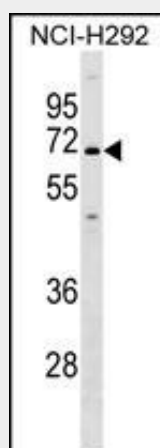
Membrane; Multi-pass membrane protein.

#### KCNN1 Antibody (C-term) - Protocols

Provided below are standard protocols that you may find useful for product applications.

- [Western Blot](#)
- [Blocking Peptides](#)
- [Dot Blot](#)
- [Immunohistochemistry](#)
- [Immunofluorescence](#)
- [Immunoprecipitation](#)
- [Flow Cytometry](#)
- [Cell Culture](#)

#### KCNN1 Antibody (C-term) - Images



KCNN1 Antibody (C-term) (Cat. #AP17223b) western blot analysis in NCI-H292 cell line lysates (35ug/lane). This demonstrates the KCNN1 antibody detected the KCNN1 protein (arrow).

#### KCNN1 Antibody (C-term) - Background

Action potentials in vertebrate neurons are followed by an afterhyperpolarization (AHP) that may persist for several seconds and may have profound consequences for the firing pattern of the neuron. Each component of the AHP is kinetically distinct and is mediated by different calcium-activated potassium channels. The protein encoded by this gene is activated before membrane hyperpolarization and is thought to regulate neuronal excitability by contributing to the slow component of synaptic AHP. The encoded protein is an integral membrane protein that forms a voltage-independent calcium-activated channel with three other calmodulin-binding subunits. This gene is a member of the KCNN family of potassium channel genes.

**KCNN1 Antibody (C-term) - References**

Wu, C., et al. Proteomics 7(11):1775-1785(2007)  
Wei, A.D., et al. Pharmacol. Rev. 57(4):463-472(2005)  
Arnold, S.J., et al. Neuroreport 14(2):191-195(2003)  
Boettger, M.K., et al. Brain 125 (PT 2), 252-263 (2002) :  
Zhang, B.M., et al. Biochemistry 40(10):3189-3195(2001)