

COL8A1 Antibody (N-term)
Affinity Purified Rabbit Polyclonal Antibody (Pab)
Catalog # AP17250a

Specification

COL8A1 Antibody (N-term) - Product Information

Application	WB,E
Primary Accession	P27658
Other Accession	NP_001841.2 , NP_065084.2
Reactivity	Human
Host	Rabbit
Clonality	Polyclonal
Isotype	Rabbit IgG
Antigen Region	62-89

COL8A1 Antibody (N-term) - Additional Information

Gene ID 1295

Other Names

Collagen alpha-1(VIII) chain, Endothelial collagen, Vastatin, COL8A1, C3orf7

Target/Specificity

This COL8A1 antibody is generated from rabbits immunized with a KLH conjugated synthetic peptide between 62-89 amino acids from the N-terminal region of human COL8A1.

Dilution

WB~~1:1000

Format

Purified polyclonal antibody supplied in PBS with 0.09% (W/V) sodium azide. This antibody is purified through a protein A column, followed by peptide affinity purification.

Storage

Maintain refrigerated at 2-8°C for up to 2 weeks. For long term storage store at -20°C in small aliquots to prevent freeze-thaw cycles.

Precautions

COL8A1 Antibody (N-term) is for research use only and not for use in diagnostic or therapeutic procedures.

COL8A1 Antibody (N-term) - Protein Information

Name COL8A1

Synonyms C3orf7

Function Macromolecular component of the subendothelium. Major component of the Descemet's

membrane (basement membrane) of corneal endothelial cells. Also a component of the endothelia of blood vessels. Necessary for migration and proliferation of vascular smooth muscle cells and thus, has a potential role in the maintenance of vessel wall integrity and structure, in particular in atherogenesis.

Cellular Location

Secreted, extracellular space, extracellular matrix, basement membrane

Tissue Location

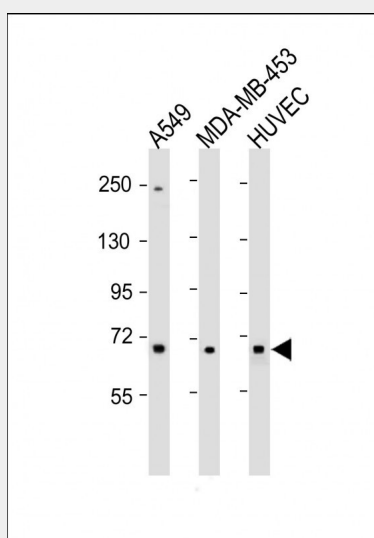
Expressed primarily in the subendothelium of large blood vessels. Also expressed in arterioles and venules in muscle, heart, kidney, spleen, umbilical cord, liver and lung and is also found in connective tissue layers around hair follicles, around nerve bundles in muscle, in the dura of the optic nerve, in cornea and sclera, and in the perichondrium of cartilaginous tissues. In the kidney, expressed in mesangial cells, glomerular endothelial cells, and tubular epithelial cells. Also expressed in mast cells, and in astrocytes during the repair process. Expressed in Descemet's membrane. Specifically expressed in peritoneal fibroblasts and mesothelial cells

COL8A1 Antibody (N-term) - Protocols

Provided below are standard protocols that you may find useful for product applications.

- [Western Blot](#)
- [Blocking Peptides](#)
- [Dot Blot](#)
- [Immunohistochemistry](#)
- [Immunofluorescence](#)
- [Immunoprecipitation](#)
- [Flow Cytometry](#)
- [Cell Culture](#)

COL8A1 Antibody (N-term) - Images



All lanes : Anti-COL8A1 Antibody (N-term) at 1:1000 dilution Lane 1: A549 whole cell lysate Lane 2: MDA-MB-453 whole cell lysate Lane 3: HUVEC whole cell lysate Lysates/proteins at 20 µg per lane. Secondary Goat Anti-Rabbit IgG, (H+L), Peroxidase conjugated at 1/10000 dilution. Predicted band size : 73 kDa Blocking/Dilution buffer: 5% NFDM/TBST.

COL8A1 Antibody (N-term) - Background

This gene encodes one of the two alpha chains of type VIII collagen. The gene product is a short chain collagen and a major component of the basement membrane of the corneal endothelium. The type VIII collagen fibril can be either a homo- or a heterotrimer. Alternatively spliced transcript variants encoding the same isoform have been observed.

COL8A1 Antibody (N-term) - References

Bailey, S.D., et al. Diabetes Care 33(10):2250-2253(2010)
Rose, J.E., et al. Mol. Med. 16 (7-8), 247-253 (2010) :
Neale, B.M., et al. Proc. Natl. Acad. Sci. U.S.A. 107(16):7395-7400(2010)
Talmud, P.J., et al. Am. J. Hum. Genet. 85(5):628-642(2009)
Marroni, F., et al. Circ Cardiovasc Genet 2(4):322-328(2009)