

SYCP1 Antibody (C-term)
Affinity Purified Rabbit Polyclonal Antibody (Pab)
Catalog # AP17271B**Specification**

SYCP1 Antibody (C-term) - Product Information

Application	WB,E
Primary Accession	Q15431
Other Accession	NP_003167.2
Reactivity	Human
Host	Rabbit
Clonality	Polyclonal
Isotype	Rabbit IgG
Calculated MW	114192
Antigen Region	927-955

SYCP1 Antibody (C-term) - Additional Information**Gene ID** 6847**Other Names**

Synaptonemal complex protein 1, SCP-1, Cancer/testis antigen 8, CT8, SYCP1, SCP1

Target/Specificity

This SYCP1 antibody is generated from rabbits immunized with a KLH conjugated synthetic peptide between 927-955 amino acids from the C-terminal region of human SYCP1.

Dilution

WB~~1:1000

Format

Purified polyclonal antibody supplied in PBS with 0.09% (W/V) sodium azide. This antibody is purified through a protein A column, followed by peptide affinity purification.

Storage

Maintain refrigerated at 2-8°C for up to 2 weeks. For long term storage store at -20°C in small aliquots to prevent freeze-thaw cycles.

Precautions

SYCP1 Antibody (C-term) is for research use only and not for use in diagnostic or therapeutic procedures.

SYCP1 Antibody (C-term) - Protein Information**Name** SYCP1 {ECO:0000303|PubMed:29915389, ECO:0000312|HGNC:HGNC:11487}**Function** Major component of the transverse filaments of synaptonemal complexes, formed between homologous chromosomes during meiotic prophase. Required for normal assembly of the

central element of the synaptonemal complexes. Required for normal centromere pairing during meiosis. Required for normal meiotic chromosome synapsis during oocyte and spermatocyte development and for normal male and female fertility.

Cellular Location

Nucleus {ECO:0000250|UniProtKB:Q62209}. Chromosome {ECO:0000250|UniProtKB:Q62209}. Chromosome, centromere {ECO:0000250|UniProtKB:Q62209}. Note=In tripartite segments of synaptonemal complexes, between lateral elements in the nucleus. Its N- terminus is found towards the center of the synaptonemal complex while the C-terminus extends well into the lateral domain of the synaptonemal complex (By similarity). Only rarely detected at centromeres during leptotene and zygotene. Detected at centromeres during mid-diplotene, when it is no longer present along chromosome arms. No longer detected at centromeres at later stages of meiosis (By similarity) {ECO:0000250|UniProtKB:Q03410, ECO:0000250|UniProtKB:Q62209}

Tissue Location

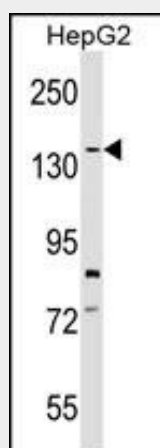
Testis..

SYCP1 Antibody (C-term) - Protocols

Provided below are standard protocols that you may find useful for product applications.

- [Western Blot](#)
- [Blocking Peptides](#)
- [Dot Blot](#)
- [Immunohistochemistry](#)
- [Immunofluorescence](#)
- [Immunoprecipitation](#)
- [Flow Cytometry](#)
- [Cell Culture](#)

SYCP1 Antibody (C-term) - Images



SYCP1 Antibody (C-term) (Cat. #AP17271b) western blot analysis in HepG2 cell line lysates (35ug/lane). This demonstrates the SYCP1 antibody detected the SYCP1 protein (arrow).

SYCP1 Antibody (C-term) - Background

Major component of the transverse filaments of synaptonemal complexes (SCS), formed between homologous chromosomes during meiotic prophase.

SYCP1 Antibody (C-term) - References

Aston, K.I., et al. Hum. Reprod. 25(6):1383-1397(2010)
Rikova, K., et al. Cell 131(6):1190-1203(2007)
Neumann, F., et al. Blood 106(9):3105-3113(2005)
Costa, Y., et al. J. Cell. Sci. 118 (PT 12), 2755-2762 (2005) :
Eichmuller, S., et al. Proc. Natl. Acad. Sci. U.S.A. 98(2):629-634(2001)