

PRDM5 Antibody (N-term)
Affinity Purified Rabbit Polyclonal Antibody (Pab)
Catalog # AP17297a

Specification

PRDM5 Antibody (N-term) - Product Information

Application	WB,E
Primary Accession	O9NOX1
Other Accession	NP_061169.2
Reactivity	Human
Host	Rabbit
Clonality	Polyclonal
Isotype	Rabbit IgG
Calculated MW	73090
Antigen Region	132-160

PRDM5 Antibody (N-term) - Additional Information

Gene ID 11107

Other Names

PR domain zinc finger protein 5, 211-, PR domain-containing protein 5, PRDM5, PFM2

Target/Specificity

This PRDM5 antibody is generated from rabbits immunized with a KLH conjugated synthetic peptide between 132-160 amino acids from the N-terminal region of human PRDM5.

Dilution

WB~~1:1000

Format

Purified polyclonal antibody supplied in PBS with 0.09% (W/V) sodium azide. This antibody is purified through a protein A column, followed by peptide affinity purification.

Storage

Maintain refrigerated at 2-8°C for up to 2 weeks. For long term storage store at -20°C in small aliquots to prevent freeze-thaw cycles.

Precautions

PRDM5 Antibody (N-term) is for research use only and not for use in diagnostic or therapeutic procedures.

PRDM5 Antibody (N-term) - Protein Information

Name PRDM5

Synonyms PFM2

Function Sequence-specific DNA-binding transcription factor. Represses transcription at least in part by recruitment of the histone methyltransferase EHMT2/G9A and histone deacetylases such as HDAC1. Regulates hematopoiesis-associated protein-coding and microRNA (miRNA) genes. May regulate the expression of proteins involved in extracellular matrix development and maintenance, including fibrillar collagens, such as COL4A1 and COL11A1, connective tissue components, such as HAPLN1, and molecules regulating cell migration and adhesion, including EDIL3 and TGFB2. May cause G2/M arrest and apoptosis in cancer cells.

Cellular Location

Nucleus

Tissue Location

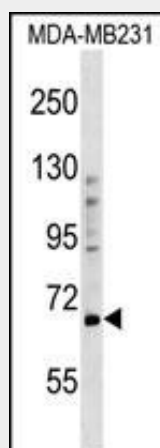
Widely expressed with highest levels in colon and ovary. Tends to be silenced in breast, colorectal, gastric and liver cancer tissues.

PRDM5 Antibody (N-term) - Protocols

Provided below are standard protocols that you may find useful for product applications.

- [Western Blot](#)
- [Blocking Peptides](#)
- [Dot Blot](#)
- [Immunohistochemistry](#)
- [Immunofluorescence](#)
- [Immunoprecipitation](#)
- [Flow Cytometry](#)
- [Cell Culture](#)

PRDM5 Antibody (N-term) - Images



PRDM5 Antibody (N-term) (Cat. #AP17297a) western blot analysis in MDA-MB231 cell line lysates (35ug/lane). This demonstrates the PRDM5 antibody detected the PRDM5 protein (arrow).

PRDM5 Antibody (N-term) - Background

The protein encoded by this gene is a transcription factor of the PR-domain protein family. It contains a PR-domain and multiple zinc finger motifs. Transcription factors of the PR-domain family are known to be involved in cell differentiation and tumorigenesis.

PRDM5 Antibody (N-term) - References

Cheng, H.Y., et al. J. Cancer Res. Clin. Oncol. 136(12):1821-1825(2010)
Rose, J.E., et al. Mol. Med. 16 (7-8), 247-253 (2010) :
Kalsi, G., et al. Hum. Mol. Genet. 19(12):2497-2506(2010)
Duan, Z., et al. Mol. Cell. Biol. 27(19):6889-6902(2007)
Watanabe, Y., et al. Clin. Cancer Res. 13(16):4786-4794(2007)