

SCAMP2 Antibody (Center)
Affinity Purified Rabbit Polyclonal Antibody (Pab)
Catalog # AP17324c**Specification**

SCAMP2 Antibody (Center) - Product Information

Application	WB,E
Primary Accession	O15127
Other Accession	O9ERN0 , NP_005688.2
Reactivity	Human
Predicted	Mouse
Host	Rabbit
Clonality	Polyclonal
Isotype	Rabbit IgG
Calculated MW	36649
Antigen Region	119-147

SCAMP2 Antibody (Center) - Additional Information**Gene ID** 10066**Other Names**

Secretory carrier-associated membrane protein 2, Secretory carrier membrane protein 2, SCAMP2

Target/Specificity

This SCAMP2 antibody is generated from rabbits immunized with a KLH conjugated synthetic peptide between 119-147 amino acids from the Central region of human SCAMP2.

Dilution

WB~~1:1000

Format

Purified polyclonal antibody supplied in PBS with 0.09% (W/V) sodium azide. This antibody is purified through a protein A column, followed by peptide affinity purification.

Storage

Maintain refrigerated at 2-8°C for up to 2 weeks. For long term storage store at -20°C in small aliquots to prevent freeze-thaw cycles.

Precautions

SCAMP2 Antibody (Center) is for research use only and not for use in diagnostic or therapeutic procedures.

SCAMP2 Antibody (Center) - Protein Information**Name** SCAMP2**Function** Functions in post-Golgi recycling pathways. Acts as a recycling carrier to the cell

surface.

Cellular Location

Golgi apparatus, trans-Golgi network membrane; Multi-pass membrane protein. Recycling endosome membrane; Multi-pass membrane protein

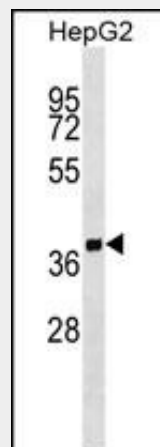
Tissue Location

Widely expressed.

SCAMP2 Antibody (Center) - Protocols

Provided below are standard protocols that you may find useful for product applications.

- [Western Blot](#)
- [Blocking Peptides](#)
- [Dot Blot](#)
- [Immunohistochemistry](#)
- [Immunofluorescence](#)
- [Immunoprecipitation](#)
- [Flow Cytometry](#)
- [Cell Culture](#)

SCAMP2 Antibody (Center) - Images

SCAMP2 Antibody (Center) (Cat. #AP17324c) western blot analysis in HepG2 cell line lysates (35ug/lane). This demonstrates the SCAMP2 antibody detected the SCAMP2 protein (arrow).

SCAMP2 Antibody (Center) - Background

This gene product belongs to the SCAMP family of proteins which are secretory carrier membrane proteins. They function as carriers to the cell surface in post-golgi recycling pathways. Different family members are highly related products of distinct genes, and are usually expressed together. These findings suggest that the SCAMPs may function at the same site during vesicular transport rather than in separate pathways.

SCAMP2 Antibody (Center) - References

Yokoyama, K., et al. Nephron Clin Pract 115 (4), C237-C243 (2010) :

Diering, G.H., et al. J. Biol. Chem. 284(20):13892-13903(2009)
Liao, H., et al. Biochemistry 46(38):10909-10920(2007)
Muller, H.K., et al. J. Biol. Chem. 281(39):28901-28909(2006)
Stelzl, U., et al. Cell 122(6):957-968(2005)