

KRT23 Antibody (Center)
Affinity Purified Rabbit Polyclonal Antibody (Pab)
Catalog # AP17336c**Specification**

KRT23 Antibody (Center) - Product Information

Application	WB,E
Primary Accession	O9C075
Other Accession	NP_056330.3
Reactivity	Human
Host	Rabbit
Clonality	Polyclonal
Isotype	Rabbit IgG
Calculated MW	48131
Antigen Region	141-170

KRT23 Antibody (Center) - Additional Information**Gene ID** 25984**Other Names**

Keratin, type I cytoskeletal 23, Cytokeratin-23, CK-23, Keratin-23, K23, KRT23

Target/Specificity

This KRT23 antibody is generated from rabbits immunized with a KLH conjugated synthetic peptide between 141-170 amino acids from the Central region of human KRT23.

Dilution

WB~~1:1000

Format

Purified polyclonal antibody supplied in PBS with 0.09% (W/V) sodium azide. This antibody is purified through a protein A column, followed by peptide affinity purification.

Storage

Maintain refrigerated at 2-8°C for up to 2 weeks. For long term storage store at -20°C in small aliquots to prevent freeze-thaw cycles.

Precautions

KRT23 Antibody (Center) is for research use only and not for use in diagnostic or therapeutic procedures.

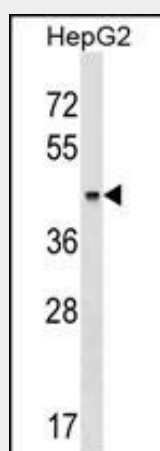
KRT23 Antibody (Center) - Protein Information**Name** KRT23

KRT23 Antibody (Center) - Protocols

Provided below are standard protocols that you may find useful for product applications.

- [Western Blot](#)
- [Blocking Peptides](#)
- [Dot Blot](#)
- [Immunohistochemistry](#)
- [Immunofluorescence](#)
- [Immunoprecipitation](#)
- [Flow Cytometry](#)
- [Cell Culture](#)

KRT23 Antibody (Center) - Images



KRT23 Antibody (Center) (Cat. #AP17336c) western blot analysis in HepG2 cell line lysates (35ug/lane). This demonstrates the KRT23 antibody detected the KRT23 protein (arrow).

KRT23 Antibody (Center) - Background

The protein encoded by this gene is a member of the keratin family. The keratins are intermediate filament proteins responsible for the structural integrity of epithelial cells and are subdivided into cytokeratins and hair keratins. The type I cytokeratins consist of acidic proteins which are arranged in pairs of heterotypic keratin chains. The type I cytokeratin genes are clustered in a region of chromosome 17q12-q21. [provided by RefSeq].

KRT23 Antibody (Center) - References

- Guey, L.T., et al. Eur. Urol. 57(2):283-292(2010)
Kim, J.J., et al. J. Hum. Genet. 55(1):27-31(2010)
Hosgood, H.D. III, et al. Respir Med 103(12):1866-1870(2009)
Shen, M., et al. Environ. Mol. Mutagen. 50(4):285-290(2009)
Birkenkamp-Demtroder, K., et al. Mol Oncol 1(2):181-195(2007)