

TNFRSF25 Antibody (Center)
Affinity Purified Rabbit Polyclonal Antibody (Pab)
Catalog # AP17360c**Specification**

TNFRSF25 Antibody (Center) - Product Information

Application	WB,E
Primary Accession	O93038
Other Accession	NP_003781.1 , NP_001034753.1
Reactivity	Human
Host	Rabbit
Clonality	Polyclonal
Isotype	Rabbit IgG
Calculated MW	45385
Antigen Region	214-242

TNFRSF25 Antibody (Center) - Additional Information**Gene ID** 8718**Other Names**

Tumor necrosis factor receptor superfamily member 25, Apo-3, Apoptosis-inducing receptor AIR, Apoptosis-mediating receptor DR3, Apoptosis-mediating receptor TRAMP, Death receptor 3, Lymphocyte-associated receptor of death, LARD, Protein WSL, Protein WSL-1, TNFRSF25, APO3, DDR3, DR3, TNFRSF12, WSL, WSL1

Target/Specificity

This TNFRSF25 antibody is generated from rabbits immunized with a KLH conjugated synthetic peptide between 214-242 amino acids from the Central region of human TNFRSF25.

Dilution

WB~~1:1000

Format

Purified polyclonal antibody supplied in PBS with 0.09% (W/V) sodium azide. This antibody is purified through a protein A column, followed by peptide affinity purification.

Storage

Maintain refrigerated at 2-8°C for up to 2 weeks. For long term storage store at -20°C in small aliquots to prevent freeze-thaw cycles.

Precautions

TNFRSF25 Antibody (Center) is for research use only and not for use in diagnostic or therapeutic procedures.

TNFRSF25 Antibody (Center) - Protein Information**Name** TNFRSF25

Synonyms APO3, DDR3, DR3, TNFRSF12, WSL, WSL1

Function Receptor for TNFSF12/APO3L/TWEAK. Interacts directly with the adapter TRADD. Mediates activation of NF-kappa-B and induces apoptosis. May play a role in regulating lymphocyte homeostasis.

Cellular Location

[Isoform 1]: Cell membrane; Single-pass type I membrane protein [Isoform 9]: Cell membrane; Single-pass type I membrane protein [Isoform 3]: Secreted. [Isoform 5]: Secreted. [Isoform 7]: Secreted. [Isoform 10]: Secreted.

Tissue Location

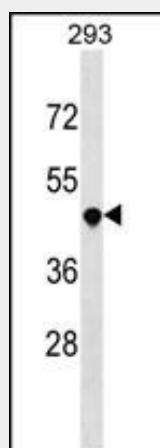
Abundantly expressed in thymocytes and lymphocytes. Detected in lymphocyte-rich tissues such as thymus, colon, intestine, and spleen. Also found in the prostate

TNFRSF25 Antibody (Center) - Protocols

Provided below are standard protocols that you may find useful for product applications.

- [Western Blot](#)
- [Blocking Peptides](#)
- [Dot Blot](#)
- [Immunohistochemistry](#)
- [Immunofluorescence](#)
- [Immunoprecipitation](#)
- [Flow Cytometry](#)
- [Cell Culture](#)

TNFRSF25 Antibody (Center) - Images



TNFRSF25 Antibody (Center) (Cat. #AP17360c) western blot analysis in 293 cell line lysates (35ug/lane). This demonstrates the TNFRSF25 antibody detected the TNFRSF25 protein (arrow).

TNFRSF25 Antibody (Center) - Background

The protein encoded by this gene is a member of the TNF-receptor superfamily. This receptor is expressed preferentially in the tissues enriched in lymphocytes, and it may play a role in regulating lymphocyte homeostasis. This receptor has been shown to stimulate NF-kappa B activity and regulate cell apoptosis. The

signal transduction of this receptor is mediated by various death domain containing adaptor proteins. Knockout studies in mice suggested the role of this gene in the removal of self-reactive T cells in the thymus. Multiple alternatively spliced transcript variants of this gene encoding distinct isoforms have been reported, most of which are potentially secreted molecules. The alternative splicing of this gene in B and T cells encounters a programmed change upon T-cell activation, which predominantly produces full-length, membrane bound isoforms, and is thought to be involved in controlling lymphocyte proliferation induced by T-cell activation.

TNFRSF25 Antibody (Center) - References

Bayry, J. Nat Rev Rheumatol 6(2):67-68(2010)
Hosgood, H.D. III, et al. Occup Environ Med 66(12):848-853(2009)
Andresdottir, M.B., et al. Clin Transplant 23(5):660-665(2009)
Fang, L., et al. J. Exp. Med. 205(5):1037-1048(2008)
Han, J.Y., et al. Mol. Cells 22(2):168-174(2006)