

C9orf7 Antibody (C-term)
Affinity Purified Rabbit Polyclonal Antibody (Pab)
Catalog # AP17389b

Specification

C9orf7 Antibody (C-term) - Product Information

Application	WB,E
Primary Accession	O9UGQ2
Other Accession	D4A9I3 , Q8BG21 , NP_060056.1 , NP_001129247.1
Reactivity	Human, Mouse
Predicted	Rat
Host	Rabbit
Clonality	Polyclonal
Isotype	Rabbit IgG
Calculated MW	18470
Antigen Region	123-151

C9orf7 Antibody (C-term) - Additional Information

Gene ID 11094

Other Names

Calcium channel flower homolog, Calcium channel flower domain-containing protein 1, CACFD1, C9orf7

Target/Specificity

This C9orf7 antibody is generated from rabbits immunized with a KLH conjugated synthetic peptide between 123-151 amino acids from the C-terminal region of human C9orf7.

Dilution

WB~~1:1000

Format

Purified polyclonal antibody supplied in PBS with 0.09% (W/V) sodium azide. This antibody is purified through a protein A column, followed by peptide affinity purification.

Storage

Maintain refrigerated at 2-8°C for up to 2 weeks. For long term storage store at -20°C in small aliquots to prevent freeze-thaw cycles.

Precautions

C9orf7 Antibody (C-term) is for research use only and not for use in diagnostic or therapeutic procedures.

C9orf7 Antibody (C-term) - Protein Information

Name CACFD1

Synonyms C9orf7

Function Transmembrane protein which mediates synaptic endocytosis and fitness-based cell culling (PubMed:[31341286](#), PubMed:[37348560](#)). In response to different stimulus strengths, controls two major modes of synaptic vesicle (SV) retrieval in hippocampal neurons; Clathrin-mediated endocytosis (CME) in response to mild stimulation and activity-dependent bulk endocytosis (ADBE) in response to strong stimulation (By similarity). In cytotoxic T-lymphocytes (CTLs) facilitates calcium-dependent endocytosis of cytotoxic granules at the immuno synapse (By similarity). Different isoforms work as fitness fingerprints in 'loser' and 'winner' cells and thereby mediate win/lose decisions as part of the cell competition process (PubMed:[31341286](#)).

Cellular Location

Cell membrane; Multi-pass membrane protein. Cytoplasmic vesicle, secretory vesicle, synaptic vesicle {ECO:0000250|UniProtKB:D4A9I3}. Golgi apparatus {ECO:0000250|UniProtKB:D4A9I3}. Vesicle {ECO:0000250|UniProtKB:Q8BG21} Note=In cytotoxic T-lymphocytes, localizes to intracellular vesicles that move to the immuno synapse (By similarity). Enriched in synaptic vesicles at the presynaptic vesicles (By similarity). Detected in the Golgi apparatus of cultured hippocampal neurons (By similarity) {ECO:0000250|UniProtKB:D4A9I3, ECO:0000250|UniProtKB:Q8BG21} [Isoform 2]: Endoplasmic reticulum membrane; Multi-pass membrane protein

Tissue Location

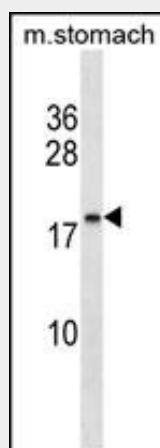
Detected in skin cells at low levels of expression (at protein level).

C9orf7 Antibody (C-term) - Protocols

Provided below are standard protocols that you may find useful for product applications.

- [Western Blot](#)
- [Blocking Peptides](#)
- [Dot Blot](#)
- [Immunohistochemistry](#)
- [Immunofluorescence](#)
- [Immunoprecipitation](#)
- [Flow Cytometry](#)
- [Cell Culture](#)

C9orf7 Antibody (C-term) - Images



C9orf7 Antibody (C-term) (Cat. #AP17389b) western blot analysis in mouse stomach tissue

lysates (35ug/lane). This demonstrates the C9orf7 antibody detected the C9orf7 protein (arrow).

C9orf7 Antibody (C-term) - Background

C9orf7 belongs to the calcium channel flower family.

C9orf7 Antibody (C-term) - References

Yao, C.K., et al. Cell 138(5):947-960(2009)
Yuan, X., et al. Am. J. Hum. Genet. 83(4):520-528(2008)
Humphray, S.J., et al. Nature 429(6990):369-374(2004)
Clark, H.F., et al. Genome Res. 13(10):2265-2270(2003)