

**SPRY2 Antibody (N-term)**  
**Affinity Purified Rabbit Polyclonal Antibody (Pab)**  
**Catalog # AP17407a**

**Specification**

---

**SPRY2 Antibody (N-term) - Product Information**

Application	WB,E
Primary Accession	<a href="#">O43597</a>
Other Accession	<a href="#">Q2PFN5</a> , <a href="#">NP_005833.1</a>
Reactivity	Human, Mouse
Predicted	Monkey
Host	Rabbit
Clonality	Polyclonal
Isotype	Rabbit IgG
Calculated MW	34688
Antigen Region	6-35

**SPRY2 Antibody (N-term) - Additional Information**

**Gene ID** 10253

**Other Names**

Protein sprouty homolog 2, Spry-2, SPRY2

**Target/Specificity**

This SPRY2 antibody is generated from rabbits immunized with a KLH conjugated synthetic peptide between 6-35 amino acids from the N-terminal region of human SPRY2.

**Dilution**

WB~~1:1000

**Format**

Purified polyclonal antibody supplied in PBS with 0.09% (W/V) sodium azide. This antibody is purified through a protein A column, followed by peptide affinity purification.

**Storage**

Maintain refrigerated at 2-8°C for up to 2 weeks. For long term storage store at -20°C in small aliquots to prevent freeze-thaw cycles.

**Precautions**

SPRY2 Antibody (N-term) is for research use only and not for use in diagnostic or therapeutic procedures.

**SPRY2 Antibody (N-term) - Protein Information**

**Name** SPRY2

**Function** Antagonist of fibroblast growth factor (FGF) pathways via inhibition of FGF-mediated

phosphorylation of ERK1/2 (By similarity). Thereby acts as an antagonist of FGF-induced retinal lens fiber differentiation, may inhibit limb bud outgrowth and may negatively modulate respiratory organogenesis (By similarity). Inhibits TGFB- induced epithelial-to-mesenchymal transition in retinal lens epithelial cells (By similarity). Inhibits CBL/C-CBL-mediated EGFR ubiquitination (PubMed:[17974561](#)).

#### Cellular Location

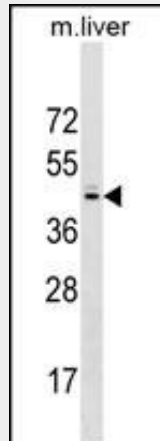
Cytoplasm, cytoskeleton. Cell projection, ruffle membrane. Note=Associated with microtubules in unstimulated cells but is translocated to the membrane ruffles in cells stimulated with EGF (epidermal growth factor)

#### SPRY2 Antibody (N-term) - Protocols

Provided below are standard protocols that you may find useful for product applications.

- [Western Blot](#)
- [Blocking Peptides](#)
- [Dot Blot](#)
- [Immunohistochemistry](#)
- [Immunofluorescence](#)
- [Immunoprecipitation](#)
- [Flow Cytometry](#)
- [Cell Culture](#)

#### SPRY2 Antibody (N-term) - Images



SPRY2 Antibody (N-term) (Cat. #AP17407a) western blot analysis in mouse liver tissue lysates (35ug/lane). This demonstrates the SPRY2 antibody detected the SPRY2 protein (arrow).

#### SPRY2 Antibody (N-term) - Background

This gene encodes a protein belonging to the sprouty family. The encoded protein contains a carboxyl-terminal cysteine-rich domain essential for the inhibitory activity on receptor tyrosine kinase signaling proteins and is required for growth factor stimulated translocation of the protein to membrane ruffles. In primary dermal endothelial cells this gene is transiently upregulated in response to fibroblast growth factor two. This protein is indirectly involved in the non-cell autonomous inhibitory effect on fibroblast growth factor two signaling. The

protein interacts with Cas-Br-M (murine) ectropic retroviral transforming sequence, and can function as a bimodal regulator of epidermal growth factor receptor/mitogen-activated protein kinase signaling. This protein may play a role in alveoli branching during lung development as shown by a similar mouse protein. [provided by RefSeq].

#### **SPRY2 Antibody (N-term) - References**

Ma, Y., et al. Cancer Lett. 298(2):150-158(2010)  
Holgren, C., et al. Oncogene 29(38):5241-5253(2010)  
Jagomagi, T., et al. Eur. J. Oral Sci. 118(3):213-220(2010)  
Chitra, E., et al. Retrovirology 7, 62 (2010) :  
Jugessur, A., et al. PLoS ONE 5 (7), E11493 (2010) :