

HLF Antibody (C-term)
Affinity Purified Rabbit Polyclonal Antibody (Pab)
Catalog # AP17419b**Specification**

HLF Antibody (C-term) - Product Information

Application	WB,E
Primary Accession	Q16534
Other Accession	Q64709 , Q8BW74 , NP_002117.1
Reactivity	Human
Predicted	Mouse, Rat
Host	Rabbit
Clonality	Polyclonal
Isotype	Rabbit IgG
Calculated MW	33199
Antigen Region	204-232

HLF Antibody (C-term) - Additional Information**Gene ID** 3131**Other Names**

Hepatic leukemia factor, HLF

Target/Specificity

This HLF antibody is generated from rabbits immunized with a KLH conjugated synthetic peptide between 204-232 amino acids from the C-terminal region of human HLF.

Dilution

WB~~1:2000

Format

Purified polyclonal antibody supplied in PBS with 0.09% (W/V) sodium azide. This antibody is purified through a protein A column, followed by peptide affinity purification.

Storage

Maintain refrigerated at 2-8°C for up to 2 weeks. For long term storage store at -20°C in small aliquots to prevent freeze-thaw cycles.

Precautions

HLF Antibody (C-term) is for research use only and not for use in diagnostic or therapeutic procedures.

HLF Antibody (C-term) - Protein Information**Name** HLF**Cellular Location**

Nucleus.

Tissue Location

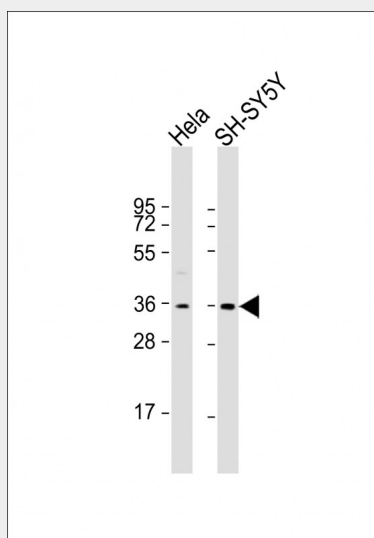
Highly expressed in liver; lower levels in lung and kidney

HLF Antibody (C-term) - Protocols

Provided below are standard protocols that you may find useful for product applications.

- [Western Blot](#)
- [Blocking Peptides](#)
- [Dot Blot](#)
- [Immunohistochemistry](#)
- [Immunofluorescence](#)
- [Immunoprecipitation](#)
- [Flow Cytometry](#)
- [Cell Culture](#)

HLF Antibody (C-term) - Images



All lanes : Anti-HLF Antibody (C-term) at 1:2000 dilution Lane 1: HeLa whole cell lysate Lane 2: SH-SY5Y whole cell lysate Lysates/proteins at 20 µg per lane. Secondary Goat Anti-Rabbit IgG, (H+L), Peroxidase conjugated at 1/10000 dilution. Predicted band size : 33 kDa Blocking/Dilution buffer: 5% NFDM/TBST.

HLF Antibody (C-term) - Background

This gene encodes a member of the proline and acidic-rich (PAR) protein family, a subset of the bZIP transcription factors. The encoded protein forms homodimers or heterodimers with other PAR family members and binds sequence-specific promoter elements to activate transcription. Chromosomal translocations fusing portions of this gene with the E2A gene cause a subset of childhood B-lineage acute lymphoid leukemias. Alternatively spliced transcript variants have been described, but their biological validity has not been determined.

HLF Antibody (C-term) - References

Hirose, K., et al. Blood 116(6):962-970(2010)
Joslyn, G., et al. Alcohol. Clin. Exp. Res. 34(5):800-812(2010)
Otto, T., et al. Endocrinology 149(5):2241-2250(2008)
Inukai, T., et al. Leukemia 21(2):288-296(2007)
He, J., et al. Zhonghua Yi Xue Yi Chuan Xue Za Zhi 22(5):551-553(2005)