

**NKIRAS1 Antibody (Center)**  
**Affinity Purified Rabbit Polyclonal Antibody (Pab)**  
**Catalog # AP17459c****Specification**

---

**NKIRAS1 Antibody (Center) - Product Information**

Application	WB,E
Primary Accession	<a href="#">O9NYS0</a>
Other Accession	<a href="#">O9BH04</a> , <a href="#">NP_065078.1</a>
Reactivity	Human
Predicted	Monkey
Host	Rabbit
Clonality	Polyclonal
Isotype	Rabbit IgG
Calculated MW	21643
Antigen Region	48-76

**NKIRAS1 Antibody (Center) - Additional Information****Gene ID** 28512**Other Names**

NF-kappa-B inhibitor-interacting Ras-like protein 1, I-kappa-B-interacting Ras-like protein 1, Kappa B-Ras protein 1, KappaB-Ras1, NKIRAS1, KBRAS1

**Target/Specificity**

This NKIRAS1 antibody is generated from rabbits immunized with a KLH conjugated synthetic peptide between 48-76 amino acids from the Central region of human NKIRAS1.

**Dilution**

WB~~1:1000

**Format**

Purified polyclonal antibody supplied in PBS with 0.09% (W/V) sodium azide. This antibody is purified through a protein A column, followed by peptide affinity purification.

**Storage**

Maintain refrigerated at 2-8°C for up to 2 weeks. For long term storage store at -20°C in small aliquots to prevent freeze-thaw cycles.

**Precautions**

NKIRAS1 Antibody (Center) is for research use only and not for use in diagnostic or therapeutic procedures.

**NKIRAS1 Antibody (Center) - Protein Information****Name** NKIRAS1

**Synonyms** KBRAS1

**Function** Atypical Ras-like protein that acts as a potent regulator of NF-kappa-B activity by preventing the degradation of NF-kappa-B inhibitor beta (NFKBIB) by most signals, explaining why NFKBIB is more resistant to degradation. May act by blocking phosphorylation of NFKBIB and mediating cytoplasmic retention of p65/RELA NF-kappa-B subunit. It is unclear whether it acts as a GTPase. Both GTP- and GDP-bound forms block phosphorylation of NFKBIB.

**Cellular Location**

Cytoplasm.

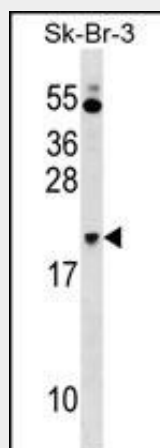
**Tissue Location**

Widely expressed..

**NKIRAS1 Antibody (Center) - Protocols**

Provided below are standard protocols that you may find useful for product applications.

- [Western Blot](#)
- [Blocking Peptides](#)
- [Dot Blot](#)
- [Immunohistochemistry](#)
- [Immunofluorescence](#)
- [Immunoprecipitation](#)
- [Flow Cytometry](#)
- [Cell Culture](#)

**NKIRAS1 Antibody (Center) - Images**

NKIRAS1 Antibody (Center) (Cat. #AP17459c) western blot analysis in SK-BR-3 cell line lysates (35ug/lane). This demonstrates the NKIRAS1 antibody detected the NKIRAS1 protein (arrow).

**NKIRAS1 Antibody (Center) - Background**

Atypical Ras-like protein that acts as a potent regulator of NF-kappa-B activity by preventing the degradation of NF-kappa-B inhibitor beta (NFKBIB) by most signals, explaining why NFKBIB is more resistant to degradation. May act by blocking phosphorylation of NFKBIB and mediating cytoplasmic retention of p65/RELA NF-kappa-B subunit. It is unclear whether it acts as a GTPase. Both GTP- and GDP-bound forms block phosphorylation of NFKBIB.

**NKIRAS1 Antibody (Center) - References**

Gerashchenko, G.V., et al. Exp. Oncol. 32(2):71-75(2010)  
Dieguez-Gonzalez, R., et al. Ann. Rheum. Dis. 68(4):579-583(2009)  
Barrios-Rodiles, M., et al. Science 307(5715):1621-1625(2005)  
Chen, Y., et al. Mol. Cell. Biol. 24(7):3048-3056(2004)  
Chen, Y., et al. J. Biol. Chem. 278(25):23101-23106(2003)