

**CHERP Antibody (C-term)**  
**Affinity Purified Rabbit Polyclonal Antibody (Pab)**  
**Catalog # AP17516b****Specification**

---

**CHERP Antibody (C-term) - Product Information**

Application	WB,E
Primary Accession	<a href="#">Q8IWX8</a>
Other Accession	<a href="#">Q8CGZ0</a> , <a href="#">NP_006378.3</a>
Reactivity	Human
Predicted	Mouse
Host	Rabbit
Clonality	Polyclonal
Isotype	Rabbit IgG
Calculated MW	103702
Antigen Region	877-903

**CHERP Antibody (C-term) - Additional Information****Gene ID** 10523**Other Names**

Calcium homeostasis endoplasmic reticulum protein, ERPROT 213-21, SR-related CTD-associated factor 6, CHERP (<a href="http://www.genenames.org/cgi-bin/gene\_symbol\_report?hgnc\_id=16930" target="\_blank">HGNC:16930</a>)

**Target/Specificity**

This CHERP antibody is generated from rabbits immunized with a KLH conjugated synthetic peptide between 877-903 amino acids from the C-terminal region of human CHERP.

**Dilution**

WB~~1:1000

**Format**

Purified polyclonal antibody supplied in PBS with 0.09% (W/V) sodium azide. This antibody is purified through a protein A column, followed by peptide affinity purification.

**Storage**

Maintain refrigerated at 2-8°C for up to 2 weeks. For long term storage store at -20°C in small aliquots to prevent freeze-thaw cycles.

**Precautions**

CHERP Antibody (C-term) is for research use only and not for use in diagnostic or therapeutic procedures.

**CHERP Antibody (C-term) - Protein Information**

**Name** CHERP ([HGNC:16930](#))

**Function** Involved in calcium homeostasis, growth and proliferation.

**Cellular Location**

Cytoplasm. Cytoplasm, perinuclear region. Endoplasmic reticulum. Note=Distributed throughout the cytoplasm and also localizes to the perinuclear region of both human erythroleukemia (HEL) cells and Jurkat cells. Colocalizes with ITPR1

**Tissue Location**

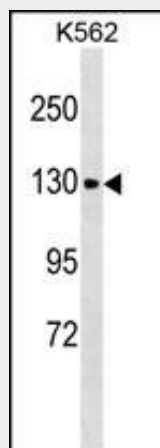
Expressed in brain, placenta, lung, liver, kidney, pancreas, cardiac and skeletal muscle, and in cultured HEL and Dami cells.

**CHERP Antibody (C-term) - Protocols**

Provided below are standard protocols that you may find useful for product applications.

- [Western Blot](#)
- [Blocking Peptides](#)
- [Dot Blot](#)
- [Immunohistochemistry](#)
- [Immunofluorescence](#)
- [Immunoprecipitation](#)
- [Flow Cytometry](#)
- [Cell Culture](#)

**CHERP Antibody (C-term) - Images**



CHERP Antibody (C-term) (Cat. #AP17516b) western blot analysis in K562 cell line lysates (35ug/lane). This demonstrates the CHERP antibody detected the CHERP protein (arrow).

**CHERP Antibody (C-term) - Background**

CHERP is involved in calcium homeostasis, growth and proliferation.

**CHERP Antibody (C-term) - References**

Olsen, J.V., et al. Cell 127(3):635-648(2006)  
Laplante, J.M., et al. Biochem. J. 348 PT 1, 189-199 (2000) :  
Imbert, G., et al. Nat. Genet. 14(3):285-291(1996)