

FBXO16 Antibody (C-term)
Affinity Purified Rabbit Polyclonal Antibody (Pab)
Catalog # AP17533B**Specification**

FBXO16 Antibody (C-term) - Product Information

Application	WB,E
Primary Accession	Q8IX29
Other Accession	NP_758954.1
Reactivity	Human
Host	Rabbit
Clonality	Polyclonal
Isotype	Rabbit IgG
Calculated MW	34588
Antigen Region	245-272

FBXO16 Antibody (C-term) - Additional Information**Gene ID** 157574**Other Names**

F-box only protein 16, FBXO16, FBX16

Target/Specificity

This FBXO16 antibody is generated from rabbits immunized with a KLH conjugated synthetic peptide between 245-272 amino acids from the C-terminal region of human FBXO16.

Dilution

WB~~1:1000

Format

Purified polyclonal antibody supplied in PBS with 0.09% (W/V) sodium azide. This antibody is purified through a protein A column, followed by peptide affinity purification.

Storage

Maintain refrigerated at 2-8°C for up to 2 weeks. For long term storage store at -20°C in small aliquots to prevent freeze-thaw cycles.

Precautions

FBXO16 Antibody (C-term) is for research use only and not for use in diagnostic or therapeutic procedures.

FBXO16 Antibody (C-term) - Protein Information**Name** FBXO16**Synonyms** FBX16

Function Probably recognizes and binds to some phosphorylated proteins and promotes their ubiquitination and degradation.

Tissue Location

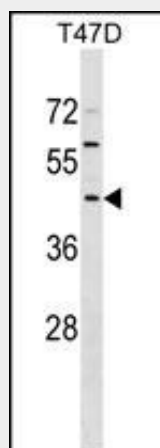
Expressed in heart, spleen and colon.

FBXO16 Antibody (C-term) - Protocols

Provided below are standard protocols that you may find useful for product applications.

- [Western Blot](#)
- [Blocking Peptides](#)
- [Dot Blot](#)
- [Immunohistochemistry](#)
- [Immunofluorescence](#)
- [Immunoprecipitation](#)
- [Flow Cytometry](#)
- [Cell Culture](#)

FBXO16 Antibody (C-term) - Images



FBXO16 Antibody (C-term) (Cat. #AP17533b) western blot analysis in T47D cell line lysates (35ug/lane). This demonstrates the FBXO16 antibody detected the FBXO16 protein (arrow).

FBXO16 Antibody (C-term) - Background

This gene encodes a member of the F-box protein family, members of which are characterized by an approximately 40 amino acid motif, the F-box. The F-box proteins constitute one of the four subunits of ubiquitin protein ligase complex called SCFs (SKP1-cullin-F-box), which function in phosphorylation-dependent ubiquitination. The F-box proteins are divided into three classes: Fbws containing WD-40 domains, Fbls containing leucine-rich repeats, and Fbxs containing either different protein-protein interaction modules or no recognizable motifs. The protein encoded by this gene belongs to the Fbx class.

FBXO16 Antibody (C-term) - References

Cheng, H., et al. Mol. Cells 14(1):56-59(2002)

Cenciarelli, C., et al. Curr. Biol. 9(20):1177-1179(1999)