

TGM3 Antibody (C-term)
Affinity Purified Rabbit Polyclonal Antibody (Pab)
Catalog # AP17540b**Specification**

TGM3 Antibody (C-term) - Product Information

Application	WB,E
Primary Accession	Q08188
Other Accession	NP_003236.3
Reactivity	Human
Host	Rabbit
Clonality	Polyclonal
Isotype	Rabbit IgG
Calculated MW	76632
Antigen Region	539-567

TGM3 Antibody (C-term) - Additional Information**Gene ID** 7053**Other Names**

Protein-glutamine gamma-glutamyltransferase E, Transglutaminase E, TG(E), TGE, TGase E, Transglutaminase-3, TGase-3, Protein-glutamine gamma-glutamyltransferase E 50 kDa catalytic chain, Protein-glutamine gamma-glutamyltransferase E 27 kDa non-catalytic chain, TGM3

Target/Specificity

This TGM3 antibody is generated from rabbits immunized with a KLH conjugated synthetic peptide between 539-567 amino acids from the C-terminal region of human TGM3.

Dilution

WB~~1:1000

Format

Purified polyclonal antibody supplied in PBS with 0.09% (W/V) sodium azide. This antibody is purified through a protein A column, followed by peptide affinity purification.

Storage

Maintain refrigerated at 2-8°C for up to 2 weeks. For long term storage store at -20°C in small aliquots to prevent freeze-thaw cycles.

Precautions

TGM3 Antibody (C-term) is for research use only and not for use in diagnostic or therapeutic procedures.

TGM3 Antibody (C-term) - Protein Information**Name** TGM3

Function Catalyzes the calcium-dependent formation of isopeptide cross-links between glutamine and lysine residues in various proteins, as well as the conjugation of polyamines to proteins. Involved in the formation of the cornified envelope (CE), a specialized component consisting of covalent cross-links of proteins beneath the plasma membrane of terminally differentiated keratinocytes. Catalyzes small proline-rich proteins (SPRR1 and SPRR2) and LOR cross-linking to form small interchain oligomers, which are further cross-linked by TGM1 onto the growing CE scaffold (By similarity). In hair follicles, involved in cross-linking structural proteins to hardening the inner root sheath.

Cellular Location

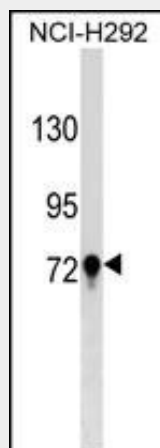
Cytoplasm.

TGM3 Antibody (C-term) - Protocols

Provided below are standard protocols that you may find useful for product applications.

- [Western Blot](#)
- [Blocking Peptides](#)
- [Dot Blot](#)
- [Immunohistochemistry](#)
- [Immunofluorescence](#)
- [Immunoprecipitation](#)
- [Flow Cytometry](#)
- [Cell Culture](#)

TGM3 Antibody (C-term) - Images



TGM3 Antibody (C-term) (Cat. #AP17540b) western blot analysis in NCI-H292 cell line lysates (35ug/lane). This demonstrates the TGM3 antibody detected the TGM3 protein (arrow).

TGM3 Antibody (C-term) - Background

Transglutaminases are enzymes that catalyze the crosslinking of proteins by epsilon-gamma glutamyl lysine isopeptide bonds. While the primary structure of transglutaminases is not conserved, they all have the same amino acid sequence at their active sites and their activity is calcium-dependent. The protein encoded by this gene consists of two polypeptide chains activated from a single precursor protein by proteolysis. The encoded protein is involved the later stages of cell envelope

formation in the epidermis and hair follicle.

TGM3 Antibody (C-term) - References

Yamane, A., et al. FEBS J. 277(17):3564-3574(2010)
Rose, J.E., et al. Mol. Med. 16 (7-8), 247-253 (2010) :
Negishi, A., et al. Cancer Sci. 100(9):1605-1611(2009)
Fujimoto, A., et al. J. Hum. Genet. 54(8):461-465(2009)
Uemura, N., et al. Int. J. Cancer 124(9):2106-2115(2009)