

CREBZF Antibody (C-term)
Affinity Purified Rabbit Polyclonal Antibody (Pab)
Catalog # AP17569b**Specification**

CREBZF Antibody (C-term) - Product Information

Application	WB,E
Primary Accession	O9NS37
Other Accession	O91ZR3 , NP_001034707.1
Reactivity	Human
Predicted	Mouse
Host	Rabbit
Clonality	Polyclonal
Isotype	Rabbit IgG
Calculated MW	37134
Antigen Region	280-309

CREBZF Antibody (C-term) - Additional Information**Gene ID** 58487**Other Names**

CREB/ATF bZIP transcription factor, Host cell factor-binding transcription factor Zhangfei, HCF-binding transcription factor Zhangfei, CREBZF, ZF

Target/Specificity

This CREBZF antibody is generated from rabbits immunized with a KLH conjugated synthetic peptide between 280-309 amino acids from the C-terminal region of human CREBZF.

Dilution

WB~~1:1000

Format

Purified polyclonal antibody supplied in PBS with 0.09% (W/V) sodium azide. This antibody is purified through a protein A column, followed by peptide affinity purification.

Storage

Maintain refrigerated at 2-8°C for up to 2 weeks. For long term storage store at -20°C in small aliquots to prevent freeze-thaw cycles.

Precautions

CREBZF Antibody (C-term) is for research use only and not for use in diagnostic or therapeutic procedures.

CREBZF Antibody (C-term) - Protein Information**Name** CREBZF

Synonyms ZF

Function Strongly activates transcription when bound to HCFC1. Suppresses the expression of HSV proteins in cells infected with the virus in a HCFC1-dependent manner. Also suppresses the HCFC1-dependent transcriptional activation by CREB3 and reduces the amount of CREB3 in the cell. Able to down-regulate expression of some cellular genes in CREBZF-expressing cells.

Cellular Location

Nucleus. Note=Colocalizes in promyelocytic leukemia protein nuclear bodies (PML- NB) with CREB3 and HCFC1

Tissue Location

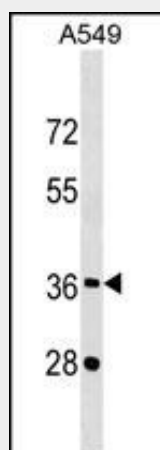
In adults, expressed most abundantly in heart, liver and skeletal muscle, moderately abundant in kidney and pancreas, and barely detectable in lung. In fetal tissues, expressed most abundantly in kidney and very low amounts in heart, lung and liver

CREBZF Antibody (C-term) - Protocols

Provided below are standard protocols that you may find useful for product applications.

- [Western Blot](#)
- [Blocking Peptides](#)
- [Dot Blot](#)
- [Immunohistochemistry](#)
- [Immunofluorescence](#)
- [Immunoprecipitation](#)
- [Flow Cytometry](#)
- [Cell Culture](#)

CREBZF Antibody (C-term) - Images



CREBZF Antibody (C-term) (Cat. #AP17569b) western blot analysis in A549 cell line lysates (35ug/lane). This demonstrates the CREBZF antibody detected the CREBZF protein (arrow).

CREBZF Antibody (C-term) - Background

Strongly activates transcription when bound to HCFC1. Suppresses the expression of HSV proteins in cells infected with the virus in a HCFC1-dependent manner. Also suppresses the HCFC1-dependent transcriptional activation by CREB3 and reduces the amount of CREB3 in the cell. Able to down-regulate expression of some cellular genes in CREBZF-expressing cells.

CREBZF Antibody (C-term) - References

Xie, Y.B., et al. J. Biol. Chem. 284(42):28762-28774(2009)
Valderrama, X., et al. J. Neurooncol. 91(1):7-17(2009)
Xie, Y.B., et al. Biochem. J. 416(3):463-473(2008)
Valderrama, X., et al. J. Neurovirol. 14(5):425-436(2008)
Hogan, M.R., et al. FEBS Lett. 580(1):58-62(2006)