

**ALS2CL Antibody (Center)**  
**Affinity Purified Rabbit Polyclonal Antibody (Pab)**  
**Catalog # AP17574c****Specification**

---

**ALS2CL Antibody (Center) - Product Information**

Application	WB,E
Primary Accession	<a href="#">Q60I27</a>
Other Accession	<a href="#">NP_001177636.1</a>
Reactivity	Human
Host	Rabbit
Clonality	Polyclonal
Isotype	Rabbit IgG
Calculated MW	107748
Antigen Region	349-377

**ALS2CL Antibody (Center) - Additional Information****Gene ID** 259173**Other Names**

ALS2 C-terminal-like protein, ALS2CL

**Target/Specificity**

This ALS2CL antibody is generated from rabbits immunized with a KLH conjugated synthetic peptide between 349-377 amino acids from the Central region of human ALS2CL.

**Dilution**

WB~~1:1000

**Format**

Purified polyclonal antibody supplied in PBS with 0.09% (W/V) sodium azide. This antibody is purified through a protein A column, followed by peptide affinity purification.

**Storage**

Maintain refrigerated at 2-8°C for up to 2 weeks. For long term storage store at -20°C in small aliquots to prevent freeze-thaw cycles.

**Precautions**

ALS2CL Antibody (Center) is for research use only and not for use in diagnostic or therapeutic procedures.

**ALS2CL Antibody (Center) - Protein Information****Name** ALS2CL

**Function** Acts as a guanine nucleotide exchange factor (GEF) for Rab5 GTPase. Regulates the ALS2-mediated endosome dynamics.

**Cellular Location**

Cytoplasm. Note=Distributed onto the vesicular compartments in the cytoplasm with strong punctated staining Colocalizes with RAB5A onto the vesicular/membranous compartments in the cytoplasm, particularly to the leading edges of the cells

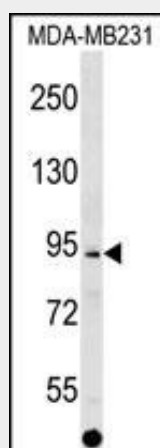
**Tissue Location**

Expressed in heart and kidney.

**ALS2CL Antibody (Center) - Protocols**

Provided below are standard protocols that you may find useful for product applications.

- [Western Blot](#)
- [Blocking Peptides](#)
- [Dot Blot](#)
- [Immunohistochemistry](#)
- [Immunofluorescence](#)
- [Immunoprecipitation](#)
- [Flow Cytometry](#)
- [Cell Culture](#)

**ALS2CL Antibody (Center) - Images**

ALS2CL Antibody (Center) (Cat. #AP17574c) western blot analysis in MDA-MB231 cell line lysates (35ug/lane). This demonstrates the ALS2CL antibody detected the ALS2CL protein (arrow).

**ALS2CL Antibody (Center) - Background**

ALS2CL acts as a guanine nucleotide exchange factor (GEF) for Rab5 GTPase. Regulates the ALS2-mediated endosome dynamics.

**ALS2CL Antibody (Center) - References**

Suzuki-Utsunomiya, K., et al. Biochem. Biophys. Res. Commun. 354(2):491-497(2007)  
Hadano, S., et al. FEBS Lett. 575 (1-3), 64-70 (2004) :