

RBM11 Antibody (N-term)
Affinity Purified Rabbit Polyclonal Antibody (Pab)
Catalog # AP17595a**Specification**

RBM11 Antibody (N-term) - Product Information

Application	WB,E
Primary Accession	P57052
Other Accession	NP_658983.3
Reactivity	Human
Host	Rabbit
Clonality	Polyclonal
Isotype	Rabbit IgG
Calculated MW	32179
Antigen Region	28-54

RBM11 Antibody (N-term) - Additional Information**Gene ID** 54033**Other Names**

Splicing regulator RBM11, RNA-binding motif protein 11, RBM11

Target/Specificity

This RBM11 antibody is generated from rabbits immunized with a KLH conjugated synthetic peptide between 28-54 amino acids from the N-terminal region of human RBM11.

Dilution

WB~~1:1000

Format

Purified polyclonal antibody supplied in PBS with 0.09% (W/V) sodium azide. This antibody is purified through a protein A column, followed by peptide affinity purification.

Storage

Maintain refrigerated at 2-8°C for up to 2 weeks. For long term storage store at -20°C in small aliquots to prevent freeze-thaw cycles.

Precautions

RBM11 Antibody (N-term) is for research use only and not for use in diagnostic or therapeutic procedures.

RBM11 Antibody (N-term) - Protein Information**Name** RBM11 ([HGNC:9897](#))

Function Tissue-specific splicing factor with potential implication in the regulation of alternative splicing during neuron and germ cell differentiation. Antagonizes SRSF1-mediated BCL-X splicing.

May affect the choice of alternative 5' splice sites by binding to specific sequences in exons and antagonizing the SR protein SRSF1.

Cellular Location

Nucleus, nucleoplasm. Nucleus speckle. Note=Enriched in SRSF2-containing splicing speckles; shuttles between nucleoplasm and speckles

Tissue Location

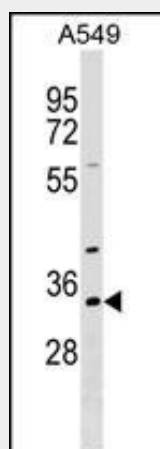
Expressed in brain, hippocampus, prefrontal cortex, cerebellum, spinal cord, testis, mammary gland, spleen and kidney. Also expressed in fetal brain.

RBM11 Antibody (N-term) - Protocols

Provided below are standard protocols that you may find useful for product applications.

- [Western Blot](#)
- [Blocking Peptides](#)
- [Dot Blot](#)
- [Immunohistochemistry](#)
- [Immunofluorescence](#)
- [Immunoprecipitation](#)
- [Flow Cytometry](#)
- [Cell Culture](#)

RBM11 Antibody (N-term) - Images



RBM11 Antibody (N-term) (Cat. #AP17595a) western blot analysis in A549 cell line lysates (35ug/lane). This demonstrates the RBM11 antibody detected the RBM11 protein (arrow).

RBM11 Antibody (N-term) - Background

RBM11, also known as RNA binding motif protein 11, is a human gene. 2 isoforms of the human protein are produced by alternative splicing.

RBM11 Antibody (N-term) - References

- Wang, A.G., et al. Biochem. Biophys. Res. Commun. 345(3):1022-1032(2006)
Lim, J., et al. Cell 125(4):801-814(2006)
Brun, M.E., et al. Gene 312, 41-50 (2003) :
Gardiner, K., et al. Genomics 79(6):833-843(2002)