

**RGL4 Antibody (N-term)**  
**Affinity Purified Rabbit Polyclonal Antibody (Pab)**  
**Catalog # AP17597A****Specification**

---

**RGL4 Antibody (N-term) - Product Information**

|                   |                             |
|-------------------|-----------------------------|
| Application       | WB,E                        |
| Primary Accession | <a href="#">Q8IZJ4</a>      |
| Other Accession   | <a href="#">NP_705843.1</a> |
| Reactivity        | Human                       |
| Host              | Rabbit                      |
| Clonality         | Polyclonal                  |
| Isotype           | Rabbit IgG                  |
| Calculated MW     | 52346                       |
| Antigen Region    | 98-125                      |

**RGL4 Antibody (N-term) - Additional Information****Gene ID** 266747**Other Names**

Ral-GDS-related protein, hRGR, Ral guanine nucleotide dissociation stimulator-like 4, RalGDS-like 4, RGL4, RGR

**Target/Specificity**

This RGL4 antibody is generated from rabbits immunized with a KLH conjugated synthetic peptide between 98-125 amino acids from the N-terminal region of human RGL4.

**Dilution**

WB~~1:1000

**Format**

Purified polyclonal antibody supplied in PBS with 0.09% (W/V) sodium azide. This antibody is purified through a protein A column, followed by peptide affinity purification.

**Storage**

Maintain refrigerated at 2-8°C for up to 2 weeks. For long term storage store at -20°C in small aliquots to prevent freeze-thaw cycles.

**Precautions**

RGL4 Antibody (N-term) is for research use only and not for use in diagnostic or therapeutic procedures.

**RGL4 Antibody (N-term) - Protein Information****Name** RGL4**Synonyms** RGR

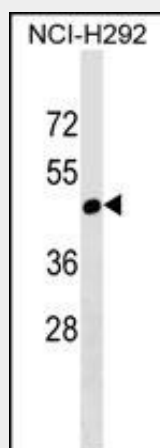
**Cellular Location**

Cytoplasmic vesicle.

**RGL4 Antibody (N-term) - Protocols**

Provided below are standard protocols that you may find useful for product applications.

- [Western Blot](#)
- [Blocking Peptides](#)
- [Dot Blot](#)
- [Immunohistochemistry](#)
- [Immunofluorescence](#)
- [Immunoprecipitation](#)
- [Flow Cytometry](#)
- [Cell Culture](#)

**RGL4 Antibody (N-term) - Images**

RGL4 Antibody (N-term) (Cat. #AP17597a) western blot analysis in NCI-H292 cell line lysates (35ug/lane). This demonstrates the RGL4 antibody detected the RGL4 protein (arrow).

**RGL4 Antibody (N-term) - Background**

Ral GDS (Ral guanine nucleotide dissociation stimulator) is a guanine nucleotide exchange factor (GEF) that activates Ral and is implicated in oncogenic Ras-induced cell transformation. RGL4 (ral guanine nucleotide dissociation stimulator-like 4), also known as Rgr, is a 473 amino acid protein that localizes to the cytoplasmic vesicle of cells. Belonging to the GEF family of proteins, RGL4 induces phosphorylation of ERKs, p38 and JNK kinases, and it increases the levels of GTP bound forms of Ral and Ras. Ras activation is crucial for the transforming activity of RGL4. Due to its similarity to Ral GDS, RGL4 may be implicated in carcinogenesis.

**RGL4 Antibody (N-term) - References**

Hernandez-Munoz, I., et al. Cancer Res. 63(14):4188-4195(2003)  
Hernandez-Munoz, I., et al. Oncogene 19(23):2745-2757(2000)  
Dunham, I., et al. Nature 402(6761):489-495(1999)  
D'Adamo, D.R., et al. Oncogene 14(11):1295-1305(1997)