

RNF219 Antibody (Center)
Affinity Purified Rabbit Polyclonal Antibody (Pab)
Catalog # AP17601C**Specification**

RNF219 Antibody (Center) - Product Information

Application	WB,E
Primary Accession	Q5W0B1
Other Accession	NP_078822.3
Reactivity	Human
Host	Rabbit
Clonality	Polyclonal
Isotype	Rabbit IgG
Calculated MW	81116
Antigen Region	275-302

RNF219 Antibody (Center) - Additional Information**Gene ID** 79596**Other Names**

RING finger protein 219, RNF219, C13orf7

Target/Specificity

This RNF219 antibody is generated from rabbits immunized with a KLH conjugated synthetic peptide between 275-302 amino acids from the Central region of human RNF219.

Dilution

WB~~1:1000

Format

Purified polyclonal antibody supplied in PBS with 0.09% (W/V) sodium azide. This antibody is purified through a protein A column, followed by peptide affinity purification.

Storage

Maintain refrigerated at 2-8°C for up to 2 weeks. For long term storage store at -20°C in small aliquots to prevent freeze-thaw cycles.

Precautions

RNF219 Antibody (Center) is for research use only and not for use in diagnostic or therapeutic procedures.

RNF219 Antibody (Center) - Protein Information**Name** OBI1 ([HGNC:20308](#))**Synonyms** C13orf7, RNF219

Function E3 ubiquitin ligase essential for DNA replication origin activation during S phase (PubMed:[31160578](#)). Acts as a replication origin selector which selects the origins to be fired and catalyzes the multi-mono-ubiquitination of a subset of chromatin-bound ORC3 and ORC5 during S-phase (PubMed:[31160578](#)).

Cellular Location

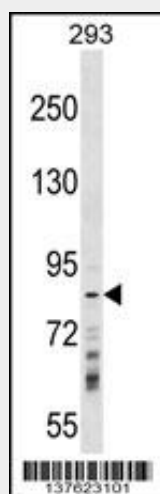
Chromosome. Note=Association to chromatin is cell cycle-regulated, absent from mitotic chromosomes, is associated with chromatin from G1 and partially released from chromatin from mid S-phase

RNF219 Antibody (Center) - Protocols

Provided below are standard protocols that you may find useful for product applications.

- [Western Blot](#)
- [Blocking Peptides](#)
- [Dot Blot](#)
- [Immunohistochemistry](#)
- [Immunofluorescence](#)
- [Immunoprecipitation](#)
- [Flow Cytometry](#)
- [Cell Culture](#)

RNF219 Antibody (Center) - Images



RNF219 Antibody (Center) (Cat. #AP17601c) western blot analysis in 293 cell line lysates (35ug/lane). This demonstrates the RNF219 antibody detected the RNF219 protein (arrow).

RNF219 Antibody (Center) - Background

C13orf7 is phosphorylated upon DNA damage, probably by ATM or ATR. However, the function of C13orf7 remains unknown.

RNF219 Antibody (Center) - References

Barber, M.J., et al. PLoS ONE 5 (3), E9763 (2010) :
Matsuoka, S., et al. Science 316(5828):1160-1166(2007)
Beausoleil, S.A., et al. Nat. Biotechnol. 24(10):1285-1292(2006)
Dunham, A., et al. Nature 428(6982):522-528(2004)