

SNX21 Antibody (Center)
Affinity Purified Rabbit Polyclonal Antibody (Pab)
Catalog # AP17607c**Specification**

SNX21 Antibody (Center) - Product Information

Application	WB,E
Primary Accession	O969T3
Other Accession	NP_219489.1
Reactivity	Human
Host	Rabbit
Clonality	Polyclonal
Isotype	Rabbit IgG
Calculated MW	41365
Antigen Region	210-236

SNX21 Antibody (Center) - Additional Information**Gene ID** 90203**Other Names**

Sorting nexin-21, Sorting nexin L, SNX-L, SNX21, C20orf161, SNXL

Target/Specificity

This SNX21 antibody is generated from rabbits immunized with a KLH conjugated synthetic peptide between 210-236 amino acids from the Central region of human SNX21.

Dilution

WB~~1:1000

Format

Purified polyclonal antibody supplied in PBS with 0.09% (W/V) sodium azide. This antibody is purified through a protein A column, followed by peptide affinity purification.

Storage

Maintain refrigerated at 2-8°C for up to 2 weeks. For long term storage store at -20°C in small aliquots to prevent freeze-thaw cycles.

Precautions

SNX21 Antibody (Center) is for research use only and not for use in diagnostic or therapeutic procedures.

SNX21 Antibody (Center) - Protein Information**Name** SNX21**Synonyms** C20orf161, SNXL

Function Binds to membranes enriched in phosphatidylinositol 3- phosphate (PtdIns(P3)) and phosphatidylinositol 4,5-bisphosphate. May be involved in several stages of intracellular trafficking.

Cellular Location

Cytoplasmic vesicle membrane {ECO:0000250|UniProtKB:Q3UR97}; Peripheral membrane protein; Cytoplasmic side. Early endosome membrane {ECO:0000250|UniProtKB:Q3UR97}; Peripheral membrane protein {ECO:0000250|UniProtKB:Q3UR97}; Cytoplasmic side {ECO:0000250|UniProtKB:Q3UR97}

Tissue Location

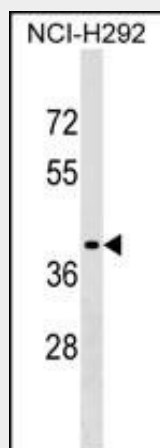
Highly expressed in fetus liver, but only weakly expressed in brain, skeleton muscle, smooth muscle, and cardiac muscle, kidney, and adrenal gland.

SNX21 Antibody (Center) - Protocols

Provided below are standard protocols that you may find useful for product applications.

- [Western Blot](#)
- [Blocking Peptides](#)
- [Dot Blot](#)
- [Immunohistochemistry](#)
- [Immunofluorescence](#)
- [Immunoprecipitation](#)
- [Flow Cytometry](#)
- [Cell Culture](#)

SNX21 Antibody (Center) - Images



SNX21 Antibody (Center) (Cat. #AP17607c) western blot analysis in NCI-H292 cell line lysates (35ug/lane). This demonstrates the SNX21 antibody detected the SNX21 protein (arrow).

SNX21 Antibody (Center) - Background

This gene encodes a member of the sorting nexin family. Members of this family contain a phox (PX) domain, which is a phosphoinositide binding domain, and are involved in intracellular trafficking. This protein does not contain a coiled coil region, like some family members. The specific function of this protein has not been determined. Multiple transcript variants encoding distinct

isoforms have been identified for this gene.

SNX21 Antibody (Center) - References

Zeng, W., et al. Biochem. Biophys. Res. Commun. 299(4):542-548(2002)
Worby, C.A., et al. Nat. Rev. Mol. Cell Biol. 3(12):919-931(2002)
Deloukas, P., et al. Nature 414(6866):865-871(2001)
Xu, Y., et al. Biochem. J. 360 (PT 3), 513-530 (2001) :
Teasdale, R.D., et al. Biochem. J. 358 (PT 1), 7-16 (2001) :