

LPHN3 Antibody (N-term)
Affinity Purified Rabbit Polyclonal Antibody (Pab)
Catalog # AP17661A

Specification

LPHN3 Antibody (N-term) - Product Information

Application	WB,E
Primary Accession	O9HAR2
Other Accession	O9Z173 , Q80TS3 , O97827 , NP_056051.2
Reactivity	Human, Mouse
Predicted	Bovine, Rat
Host	Rabbit
Clonality	Polyclonal
Isotype	Rabbit IgG
Calculated MW	161812
Antigen Region	371-397

LPHN3 Antibody (N-term) - Additional Information

Gene ID 23284

Other Names

Latrophilin-3, Calcium-independent alpha-latrotoxin receptor 3, CIRL-3, Lectomedin-3, LPHN3, KIAA0768, LEC3

Target/Specificity

This LPHN3 antibody is generated from rabbits immunized with a KLH conjugated synthetic peptide between 371-397 amino acids from the N-terminal region of human LPHN3.

Dilution

WB~~1:1000

Format

Purified polyclonal antibody supplied in PBS with 0.09% (W/V) sodium azide. This antibody is purified through a protein A column, followed by peptide affinity purification.

Storage

Maintain refrigerated at 2-8°C for up to 2 weeks. For long term storage store at -20°C in small aliquots to prevent freeze-thaw cycles.

Precautions

LPHN3 Antibody (N-term) is for research use only and not for use in diagnostic or therapeutic procedures.

LPHN3 Antibody (N-term) - Protein Information

Name ADGRL3 ([HGNC:20974](#))

Function Plays a role in cell-cell adhesion and neuron guidance via its interactions with FLRT2 and FLRT3 that are expressed at the surface of adjacent cells (PubMed:[26235030](#)). Plays a role in the development of glutamatergic synapses in the cortex. Important in determining the connectivity rates between the principal neurons in the cortex.

Cellular Location

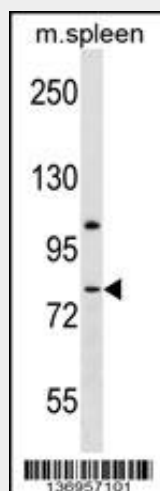
Cell membrane; Multi-pass membrane protein. Cell projection, axon {ECO:0000250|UniProtKB:Q80TS3}. Cell junction {ECO:0000250|UniProtKB:Q80TS3}

LPHN3 Antibody (N-term) - Protocols

Provided below are standard protocols that you may find useful for product applications.

- [Western Blot](#)
- [Blocking Peptides](#)
- [Dot Blot](#)
- [Immunohistochemistry](#)
- [Immunofluorescence](#)
- [Immunoprecipitation](#)
- [Flow Cytometry](#)
- [Cell Culture](#)

LPHN3 Antibody (N-term) - Images



LPHN3 Antibody (N-term) (Cat. #AP17661a) western blot analysis in mouse spleen tissue lysates (35ug/lane). This demonstrates the LPHN3 antibody detected the LPHN3 protein (arrow).

LPHN3 Antibody (N-term) - Background

This gene encodes a member of the latrophilin subfamily of G-protein coupled receptors (GPCR). Latrophilins may function in both cell adhesion and signal transduction. In experiments with non-human species, endogenous proteolytic cleavage within a cysteine-rich GPS (G-protein-coupled-receptor proteolysis site) domain resulted in two subunits (a large extracellular N-terminal cell adhesion subunit and a subunit with substantial similarity to the secretin/calcitonin family of GPCRs) being non-covalently bound at the cell membrane.

LPHN3 Antibody (N-term) - References

Arcos-Burgos, M., et al. Mol. Psychiatry 15(11):1053-1066(2010)
Shimada, M., et al. Hum. Genet. 128(4):433-441(2010)
Kasperaviciute, D., et al. Brain 133 (PT 7), 2136-2147 (2010) :
Rose, J.E., et al. Mol. Med. 16 (7-8), 247-253 (2010) :
Zemunik, T., et al. Croat. Med. J. 50(1):23-33(2009)