

**SERPINI2 Antibody (C-term)**  
**Affinity Purified Rabbit Polyclonal Antibody (Pab)**  
**Catalog # AP17666b**

**Specification**

---

**SERPINI2 Antibody (C-term) - Product Information**

Application	WB,E
Primary Accession	<a href="#">O75830</a>
Other Accession	<a href="#">NP_006208.1</a>
Reactivity	Human
Host	Rabbit
Clonality	Polyclonal
Isotype	Rabbit IgG
Calculated MW	46145
Antigen Region	375-401

**SERPINI2 Antibody (C-term) - Additional Information**

**Gene ID** 5276

**Other Names**

Serpin I2, Myoepithelium-derived serine protease inhibitor, Pancpin, Pancreas-specific protein TSA2004, Peptidase inhibitor 14, PI-14, SERPINI2, MEPI, PI14

**Target/Specificity**

This SERPINI2 antibody is generated from rabbits immunized with a KLH conjugated synthetic peptide between 375-401 amino acids from the C-terminal region of human SERPINI2.

**Dilution**

WB~~1:1000

**Format**

Purified polyclonal antibody supplied in PBS with 0.09% (W/V) sodium azide. This antibody is purified through a protein A column, followed by peptide affinity purification.

**Storage**

Maintain refrigerated at 2-8°C for up to 2 weeks. For long term storage store at -20°C in small aliquots to prevent freeze-thaw cycles.

**Precautions**

SERPINI2 Antibody (C-term) is for research use only and not for use in diagnostic or therapeutic procedures.

**SERPINI2 Antibody (C-term) - Protein Information**

**Name** SERPINI2

**Synonyms** MEPI, PI14

**Cellular Location**  
Secreted.

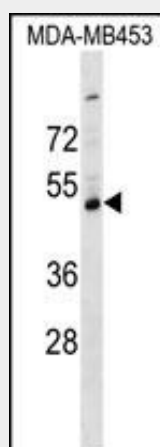
**Tissue Location**  
Expressed in pancreas and adipose tissues.

### **SERPINI2 Antibody (C-term) - Protocols**

Provided below are standard protocols that you may find useful for product applications.

- [Western Blot](#)
- [Blocking Peptides](#)
- [Dot Blot](#)
- [Immunohistochemistry](#)
- [Immunofluorescence](#)
- [Immunoprecipitation](#)
- [Flow Cytometry](#)
- [Cell Culture](#)

### **SERPINI2 Antibody (C-term) - Images**



SERPINI2 Antibody (C-term) (Cat. #AP17666b) western blot analysis in MDA-MB453 cell line lysates (35ug/lane). This demonstrates the SERPINI2 antibody detected the SERPINI2 protein (arrow).

### **SERPINI2 Antibody (C-term) - Background**

The protein encoded by this gene is a member of the serine protease inhibitor (serpin) superfamily made up of proteins which play central roles in the regulation of a wide variety of physiological processes, including coagulation, fibrinolysis, development, malignancy and inflammation. The gene product may have a role in a growth-control, possibly growth-suppressing pathway and, when impaired, may be involved in pancreatic carcinogenesis. The protein is a member of the plasminogen activator inhibitor-1 family, a subset of the serpin superfamily whose members act as tissue-specific tPA inhibitors. Two alternatively spliced transcript variants encoding distinct protein isoforms have been found for this gene.

**SERPINI2 Antibody (C-term) - References**

- Liu, C.Y., et al. Carcinogenesis 31(7):1259-1263(2010)  
Lim, J., et al. Cell 125(4):801-814(2006)  
Chang, W.S., et al. Genes Chromosomes Cancer 29(3):240-255(2000)  
Xiao, G., et al. Proc. Natl. Acad. Sci. U.S.A. 96(7):3700-3705(1999)  
Ozaki, K., et al. Genes Chromosomes Cancer 22(3):179-185(1998)