

CLEC9A Antibody (Center)
Affinity Purified Rabbit Polyclonal Antibody (Pab)
Catalog # AP17684c**Specification**

CLEC9A Antibody (Center) - Product Information

Application	WB,E
Primary Accession	Q6UXN8
Other Accession	NP_997228.1
Reactivity	Human
Host	Rabbit
Clonality	Polyclonal
Isotype	Rabbit IgG
Calculated MW	27324
Antigen Region	146-173

CLEC9A Antibody (Center) - Additional Information**Gene ID** 283420**Other Names**

C-type lectin domain family 9 member A, CLEC9A

Target/Specificity

This CLEC9A antibody is generated from rabbits immunized with a KLH conjugated synthetic peptide between 146-173 amino acids from the Central region of human CLEC9A.

Dilution

WB~~1:1000

Format

Purified polyclonal antibody supplied in PBS with 0.09% (W/V) sodium azide. This antibody is purified through a protein A column, followed by peptide affinity purification.

Storage

Maintain refrigerated at 2-8°C for up to 2 weeks. For long term storage store at -20°C in small aliquots to prevent freeze-thaw cycles.

Precautions

CLEC9A Antibody (Center) is for research use only and not for use in diagnostic or therapeutic procedures.

CLEC9A Antibody (Center) - Protein Information**Name** CLEC9A

Function Functions as an endocytic receptor on a small subset of myeloid cells specialized for the uptake and processing of material from dead cells. Recognizes filamentous form of actin in

association with particular actin-binding domains of cytoskeletal proteins, including spectrin, exposed when cell membranes are damaged, and mediate the cross-presentation of dead-cell associated antigens in a Syk-dependent manner.

Cellular Location

Membrane; Single- pass type II membrane protein

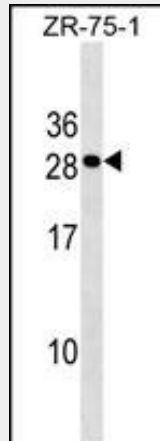
Tissue Location

In peripheral blood highly restricted on the surface of BDCA31(+) dendritic cells and on a small subset of CD14(+) and CD16(-) monocytes.

CLEC9A Antibody (Center) - Protocols

Provided below are standard protocols that you may find useful for product applications.

- [Western Blot](#)
- [Blocking Peptides](#)
- [Dot Blot](#)
- [Immunohistochemistry](#)
- [Immunofluorescence](#)
- [Immunoprecipitation](#)
- [Flow Cytometry](#)
- [Cell Culture](#)

CLEC9A Antibody (Center) - Images

CLEC9A Antibody (Center) (Cat. #AP17684c) western blot analysis in ZR-75-1 cell line lysates (35ug/lane). This demonstrates the CLEC9A antibody detected the CLEC9A protein (arrow).

CLEC9A Antibody (Center) - Background

CLEC9A is a group V C-type lectin-like receptor (CTLR) that functions as an activation receptor and is expressed on myeloid lineage cells (Huysamen et al., 2008 [PubMed 18408006]).

CLEC9A Antibody (Center) - References

Poulin, L.F., et al. J. Exp. Med. 207(6):1261-1271(2010)
Sancho, D., et al. Nature 458(7240):899-903(2009)

Caminschi, I., et al. Blood 112(8):3264-3273(2008)
Huysamen, C., et al. J. Biol. Chem. 283(24):16693-16701(2008)
Sancho, D., et al. J. Clin. Invest. 118(6):2098-2110(2008)