

FIGNL1 Antibody (N-term)
Affinity Purified Rabbit Polyclonal Antibody (Pab)
Catalog # AP17687a

Specification

FIGNL1 Antibody (N-term) - Product Information

Application	WB,E
Primary Accession	Q6PIW4
Other Accession	NP_001036227.1
Reactivity	Human
Host	Rabbit
Clonality	Polyclonal
Isotype	Rabbit IgG
Calculated MW	74077
Antigen Region	12-40

FIGNL1 Antibody (N-term) - Additional Information

Gene ID 63979

Other Names

Fidgetin-like protein 1, 364-, FIGNL1

Target/Specificity

This FIGNL1 antibody is generated from rabbits immunized with a KLH conjugated synthetic peptide between 12-40 amino acids from the N-terminal region of human FIGNL1.

Dilution

WB~~1:1000

Format

Purified polyclonal antibody supplied in PBS with 0.09% (W/V) sodium azide. This antibody is purified through a protein A column, followed by peptide affinity purification.

Storage

Maintain refrigerated at 2-8°C for up to 2 weeks. For long term storage store at -20°C in small aliquots to prevent freeze-thaw cycles.

Precautions

FIGNL1 Antibody (N-term) is for research use only and not for use in diagnostic or therapeutic procedures.

FIGNL1 Antibody (N-term) - Protein Information

Name FIGNL1

Function Involved in DNA double-strand break (DSB) repair via homologous recombination (HR). Recruited at DSB sites independently of BRCA2, RAD51 and RAD51 paralogs in a H2AX-dependent

manner. May regulate osteoblast proliferation and differentiation (PubMed:[23754376](#)). May play a role in the control of male meiosis dynamic (By similarity).

Cellular Location

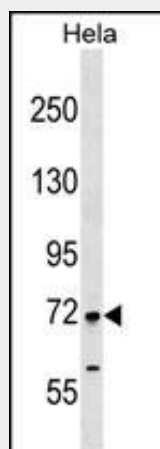
Nucleus. Cytoplasm {ECO:0000250|UniProtKB:Q8BPY9}. Cytoplasm, perinuclear region {ECO:0000250|UniProtKB:Q8BPY9}. Note=Together with RAD51 and a subset of H2A histone proteins, redistributed in discrete nuclear DNA damage- induced foci after ionizing radiation (IR) treatment (PubMed:23754376)

FIGNL1 Antibody (N-term) - Protocols

Provided below are standard protocols that you may find useful for product applications.

- [Western Blot](#)
- [Blocking Peptides](#)
- [Dot Blot](#)
- [Immunohistochemistry](#)
- [Immunofluorescence](#)
- [Immunoprecipitation](#)
- [Flow Cytometry](#)
- [Cell Culture](#)

FIGNL1 Antibody (N-term) - Images



FIGNL1 Antibody (N-term) (Cat. #AP17687a) western blot analysis in HeLa cell line lysates (35ug/lane). This demonstrates the FIGNL1 antibody detected the FIGNL1 protein (arrow).

FIGNL1 Antibody (N-term) - Background

FIGNL1 may regulate osteoblast proliferation and differentiation (By similarity).

FIGNL1 Antibody (N-term) - References

de Krom, M., et al. Biol. Psychiatry 65(7):625-630(2009)
Matsuoka, S., et al. Science 316(5828):1160-1166(2007)