

**MDH1B Antibody (Center)**  
**Affinity Purified Rabbit Polyclonal Antibody (Pab)**  
**Catalog # AP17695c****Specification**

---

**MDH1B Antibody (Center) - Product Information**

Application	WB,E
Primary Accession	<a href="#">Q5I0G3</a>
Other Accession	<a href="#">NP_001034934.1</a>
Reactivity	Human
Host	Rabbit
Clonality	Polyclonal
Isotype	Rabbit IgG
Calculated MW	58651
Antigen Region	304-332

**MDH1B Antibody (Center) - Additional Information****Gene ID** 130752**Other Names**

Putative malate dehydrogenase 1B, 111-, MDH1B

**Target/Specificity**

This MDH1B antibody is generated from rabbits immunized with a KLH conjugated synthetic peptide between 304-332 amino acids from the Central region of human MDH1B.

**Dilution**

WB~~1:1000

**Format**

Purified polyclonal antibody supplied in PBS with 0.09% (W/V) sodium azide. This antibody is purified through a protein A column, followed by peptide affinity purification.

**Storage**

Maintain refrigerated at 2-8°C for up to 2 weeks. For long term storage store at -20°C in small aliquots to prevent freeze-thaw cycles.

**Precautions**

MDH1B Antibody (Center) is for research use only and not for use in diagnostic or therapeutic procedures.

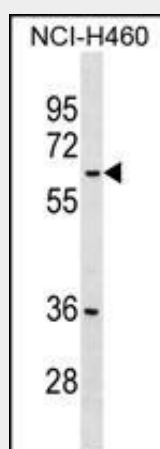
**MDH1B Antibody (Center) - Protein Information****Name** MDH1B

## MDH1B Antibody (Center) - Protocols

Provided below are standard protocols that you may find useful for product applications.

- [Western Blot](#)
- [Blocking Peptides](#)
- [Dot Blot](#)
- [Immunohistochemistry](#)
- [Immunofluorescence](#)
- [Immunoprecipitation](#)
- [Flow Cytometry](#)
- [Cell Culture](#)

## MDH1B Antibody (Center) - Images



MDH1B Antibody (Center) (Cat. #AP17695c) western blot analysis in NCI-H460 cell line lysates (35ug/lane). This demonstrates the MDH1B antibody detected the MDH1B protein (arrow).

## MDH1B Antibody (Center) - Background

MDH1B has been detected at the transcript level and is part of the malate dehydrogenase superfamily.

## MDH1B Antibody (Center) - References

Rose, J.E., et al. Mol. Med. 16 (7-8), 247-253 (2010) :