

**XYLB Antibody (N-term)**  
**Affinity Purified Rabbit Polyclonal Antibody (Pab)**  
**Catalog # AP17718a**

**Specification**

---

**XYLB Antibody (N-term) - Product Information**

Application	WB,E
Primary Accession	<a href="#">O75191</a>
Other Accession	<a href="#">NP_005099.2</a>
Reactivity	Human
Host	Rabbit
Clonality	Polyclonal
Isotype	Rabbit IgG
Calculated MW	58382
Antigen Region	18-47

**XYLB Antibody (N-term) - Additional Information**

**Gene ID** 9942

**Other Names**

Xylulose kinase, Xylulokinase, XYLB

**Target/Specificity**

This XYLB antibody is generated from rabbits immunized with a KLH conjugated synthetic peptide between 18-47 amino acids from the N-terminal region of human XYLB.

**Dilution**

WB~~1:1000

**Format**

Purified polyclonal antibody supplied in PBS with 0.09% (W/V) sodium azide. This antibody is purified through a protein A column, followed by peptide affinity purification.

**Storage**

Maintain refrigerated at 2-8°C for up to 2 weeks. For long term storage store at -20°C in small aliquots to prevent freeze-thaw cycles.

**Precautions**

XYLB Antibody (N-term) is for research use only and not for use in diagnostic or therapeutic procedures.

**XYLB Antibody (N-term) - Protein Information**

**Name** XYLB

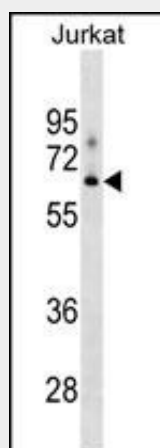
**Function** Phosphorylates D-xylulose to produce D-xylulose 5-phosphate, a molecule that may play an important role in the regulation of glucose metabolism and lipogenesis.

### XYLB Antibody (N-term) - Protocols

Provided below are standard protocols that you may find useful for product applications.

- [Western Blot](#)
- [Blocking Peptides](#)
- [Dot Blot](#)
- [Immunohistochemistry](#)
- [Immunofluorescence](#)
- [Immunoprecipitation](#)
- [Flow Cytometry](#)
- [Cell Culture](#)

### XYLB Antibody (N-term) - Images



XYLB Antibody (N-term) (Cat. #AP17718a) western blot analysis in Jurkat cell line lysates (35ug/lane). This demonstrates the XYLB antibody detected the XYLB protein (arrow).

### XYLB Antibody (N-term) - Background

The protein encoded by this gene shares 22% sequence identity with Hemophilus influenzae xylulokinase, and even higher identity to other gene products in C.elegans (45%) and yeast (31-35%), which are thought to belong to a family of enzymes that include fucokinase, gluconokinase, glycerokinase and xylulokinase. These proteins play important roles in energy metabolism. [provided by RefSeq].

### XYLB Antibody (N-term) - References

Rose, J.E., et al. Mol. Med. 16 (7-8), 247-253 (2010) :  
Smith, J.G., et al. Heart Rhythm 6(5):634-641(2009)  
Daigo, Y., et al. DNA Res. 6(1):37-44(1999)  
Tamari, M., et al. Cytogenet. Cell Genet. 82 (1-2), 101-104 (1998) :