

RMD2 Antibody (Center)
Affinity Purified Rabbit Polyclonal Antibody (Pab)
Catalog # AP17775C**Specification**

RMD2 Antibody (Center) - Product Information

Application	WB,E
Primary Accession	O96LZ7
Other Accession	NP_001164262.1
Reactivity	Human
Host	Rabbit
Clonality	Polyclonal
Isotype	Rabbit IgG
Calculated MW	47399
Antigen Region	188-216

RMD2 Antibody (Center) - Additional Information**Gene ID** 151393**Other Names**

Regulator of microtubule dynamics protein 2, RMD-2, hRMD-2, Protein FAM82A1, RMDN2, FAM82A, FAM82A1

Target/Specificity

This RMD2 antibody is generated from rabbits immunized with a KLH conjugated synthetic peptide between 188-216 amino acids from the Central region of human RMD2.

Dilution

WB~~1:1000

Format

Purified polyclonal antibody supplied in PBS with 0.09% (W/V) sodium azide. This antibody is purified through a protein A column, followed by peptide affinity purification.

Storage

Maintain refrigerated at 2-8°C for up to 2 weeks. For long term storage store at -20°C in small aliquots to prevent freeze-thaw cycles.

Precautions

RMD2 Antibody (Center) is for research use only and not for use in diagnostic or therapeutic procedures.

RMD2 Antibody (Center) - Protein Information**Name** RMDN2**Synonyms** FAM82A, FAM82A1

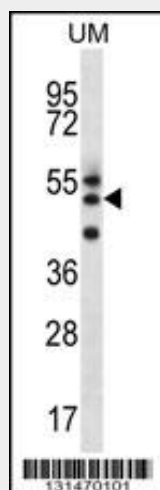
Cellular Location

Membrane; Single-pass membrane protein. Cytoplasm Cytoplasm, cytoskeleton, spindle
Cytoplasm, cytoskeleton, spindle pole Note=In interphase localizes in the cytoplasm, and during mitosis localizes to the spindle microtubules and spindle poles. Also detected as large dots in the perinuclear region

RMD2 Antibody (Center) - Protocols

Provided below are standard protocols that you may find useful for product applications.

- [Western Blot](#)
- [Blocking Peptides](#)
- [Dot Blot](#)
- [Immunohistochemistry](#)
- [Immunofluorescence](#)
- [Immunoprecipitation](#)
- [Flow Cytometry](#)
- [Cell Culture](#)

RMD2 Antibody (Center) - Images

RMD2 Antibody (Center) (Cat. #AP17775c) western blot analysis in uterus tumor cell line lysates (35ug/lane). This demonstrates the RMD2 antibody detected the RMD2 protein (arrow).

RMD2 Antibody (Center) - Background

FAM82A1 belongs to the FAM82/RMD family.