

**NEO1 Antibody (Center)**  
**Affinity Purified Rabbit Polyclonal Antibody (Pab)**  
**Catalog # AP17802C**

**Specification**

---

**NEO1 Antibody (Center) - Product Information**

Application	WB,E
Primary Accession	<a href="#">O92859</a>
Other Accession	<a href="#">P97603</a> , <a href="#">P97798</a> , <a href="#">NP_002490.2</a>
Reactivity	Human, Mouse
Predicted	Rat
Host	Rabbit
Clonality	Polyclonal
Isotype	Rabbit IgG
Antigen Region	657-685

**NEO1 Antibody (Center) - Additional Information**

**Gene ID** 4756

**Other Names**

Neogenin, Immunoglobulin superfamily DCC subclass member 2, NEO1, IGDCC2, NGN

**Target/Specificity**

This NEO1 antibody is generated from rabbits immunized with a KLH conjugated synthetic peptide between 657-685 amino acids from the Central region of human NEO1.

**Dilution**

WB~~1:1000

**Format**

Purified polyclonal antibody supplied in PBS with 0.09% (W/V) sodium azide. This antibody is purified through a protein A column, followed by peptide affinity purification.

**Storage**

Maintain refrigerated at 2-8°C for up to 2 weeks. For long term storage store at -20°C in small aliquots to prevent freeze-thaw cycles.

**Precautions**

NEO1 Antibody (Center) is for research use only and not for use in diagnostic or therapeutic procedures.

**NEO1 Antibody (Center) - Protein Information**

**Name** NEO1

**Synonyms** IGDCC2, NGN

**Function** Multi-functional cell surface receptor regulating cell adhesion in many diverse developmental processes, including neural tube and mammary gland formation, myogenesis and angiogenesis. Receptor for members of the BMP, netrin, and repulsive guidance molecule (RGM) families. Netrin-Neogenin interactions result in a chemoattractive axon guidance response and cell-cell adhesion, the interaction between NEO1/Neogenin and RGMa and RGMb induces a chemorepulsive response.

**Cellular Location**

Cell membrane; Single-pass type I membrane protein

**Tissue Location**

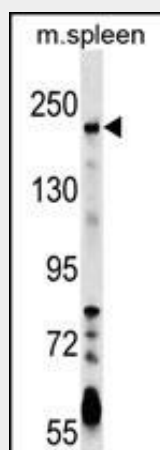
Widely expressed and also in cancer cell lines.

**NEO1 Antibody (Center) - Protocols**

Provided below are standard protocols that you may find useful for product applications.

- [Western Blot](#)
- [Blocking Peptides](#)
- [Dot Blot](#)
- [Immunohistochemistry](#)
- [Immunofluorescence](#)
- [Immunoprecipitation](#)
- [Flow Cytometry](#)
- [Cell Culture](#)

**NEO1 Antibody (Center) - Images**



NEO1 Antibody (Center) (Cat. #AP17802c) western blot analysis in mouse spleen tissue lysates (35ug/lane). This demonstrates the NEO1 antibody detected the NEO1 protein (arrow).

**NEO1 Antibody (Center) - Background**

This gene encodes a cell surface protein that is a member of the immunoglobulin superfamily. The encoded protein consists of four N-terminal immunoglobulin-like domains, six fibronectin type III domains, a transmembrane domain and a C-terminal internal domain that shares homology with the tumor suppressor candidate gene DCC. This protein may be involved in cell growth and differentiation and in cell-cell adhesion. Defects in this gene are

associated with cell proliferation in certain cancers. Alternate splicing results in multiple transcript variants. [provided by RefSeq].

#### **NEO1 Antibody (Center) - References**

Bradford, D., et al. J. Comp. Neurol. 518(16):3237-3253(2010)  
Davila, S., et al. Genes Immun. 11(3):232-238(2010)  
Zhang, A.S., et al. J. Biol. Chem. 284(34):22580-22589(2009)  
Fujita, Y., et al. Cell Death Differ. 15(10):1593-1608(2008)  
Zhang, A.S., et al. J. Biol. Chem. 283(25):17494-17502(2008)