

PLEKHA6 Antibody (Center)
Affinity Purified Rabbit Polyclonal Antibody (Pab)
Catalog # AP17827C

Specification

PLEKHA6 Antibody (Center) - Product Information

Application	WB,E
Primary Accession	O9Y2H5
Other Accession	NP_055750.2
Reactivity	Human
Host	Rabbit
Clonality	Polyclonal
Isotype	Rabbit IgG
Calculated MW	117128
Antigen Region	710-736

PLEKHA6 Antibody (Center) - Additional Information

Gene ID 22874

Other Names

Pleckstrin homology domain-containing family A member 6, PH domain-containing family A member 6, Phosphoinositol 3-phosphate-binding protein 3, PEPP-3, PLEKHA6, KIAA0969, PEPP3

Target/Specificity

This PLEKHA6 antibody is generated from rabbits immunized with a KLH conjugated synthetic peptide between 710-736 amino acids from the Central region of human PLEKHA6.

Dilution

WB~~1:1000

Format

Purified polyclonal antibody supplied in PBS with 0.09% (W/V) sodium azide. This antibody is purified through a protein A column, followed by peptide affinity purification.

Storage

Maintain refrigerated at 2-8°C for up to 2 weeks. For long term storage store at -20°C in small aliquots to prevent freeze-thaw cycles.

Precautions

PLEKHA6 Antibody (Center) is for research use only and not for use in diagnostic or therapeutic procedures.

PLEKHA6 Antibody (Center) - Protein Information

Name PLEKHA6

Synonyms KIAA0969, PEPP3

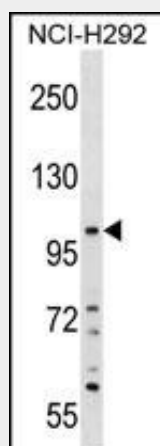
Tissue Location

Highly expressed in heart, kidney and throughout the brain

PLEKHA6 Antibody (Center) - Protocols

Provided below are standard protocols that you may find useful for product applications.

- [Western Blot](#)
- [Blocking Peptides](#)
- [Dot Blot](#)
- [Immunohistochemistry](#)
- [Immunofluorescence](#)
- [Immunoprecipitation](#)
- [Flow Cytometry](#)
- [Cell Culture](#)

PLEKHA6 Antibody (Center) - Images

PLEKHA6 Antibody (Center) (Cat. #AP17827c) western blot analysis in NCI-H292 cell line lysates (35ug/lane). This demonstrates the PLEKHA6 antibody detected the PLEKHA6 protein (arrow).

PLEKHA6 Antibody (Center) - Background

PEPP3 contains an N-terminal pleckstrin homology (PH) domain. It shares significant homology with PEPP1 and PEPP2 only in the PH domain.

PLEKHA6 Antibody (Center) - References

Rose, J. Phd, et al. Mol. Med. (2010) In press :
Ehret, G.B., et al. Eur. J. Hum. Genet. 17(12):1650-1657(2009)
Rikova, K., et al. Cell 131(6):1190-1203(2007)
Clark, T.A., et al. Genome Biol. 8 (4), R64 (2007) :
Beausoleil, S.A., et al. Nat. Biotechnol. 24(10):1285-1292(2006)