

**NOTUM Antibody (C-term)**  
**Affinity Purified Rabbit Polyclonal Antibody (Pab)**  
**Catalog # AP17837b**

**Specification**

---

**NOTUM Antibody (C-term) - Product Information**

Application	WB,E
Primary Accession	<a href="#">Q6P988</a>
Other Accession	<a href="#">NP_848588.3</a>
Reactivity	Human
Host	Rabbit
Clonality	Polyclonal
Isotype	Rabbit IgG
Calculated MW	55699
Antigen Region	353-379

**NOTUM Antibody (C-term) - Additional Information**

**Gene ID** 147111

**Other Names**

Protein notum homolog, 3---, NOTUM

**Target/Specificity**

This NOTUM antibody is generated from rabbits immunized with a KLH conjugated synthetic peptide between 353-379 amino acids from the C-terminal region of human NOTUM.

**Dilution**

WB~~1:1000

**Format**

Purified polyclonal antibody supplied in PBS with 0.09% (W/V) sodium azide. This antibody is purified through a protein A column, followed by peptide affinity purification.

**Storage**

Maintain refrigerated at 2-8°C for up to 2 weeks. For long term storage store at -20°C in small aliquots to prevent freeze-thaw cycles.

**Precautions**

NOTUM Antibody (C-term) is for research use only and not for use in diagnostic or therapeutic procedures.

**NOTUM Antibody (C-term) - Protein Information**

**Name** NOTUM ([HGNC:27106](#))

**Function** Carboxylesterase that acts as a key negative regulator of the Wnt signaling pathway by specifically mediating depalmitoleoylation of WNT proteins. Serine palmitoleoylation of WNT

proteins is required for efficient binding to frizzled receptors (PubMed:[25731175](#)).

**Cellular Location**

Secreted {ECO:0000250|UniProtKB:Q9VUX3}.

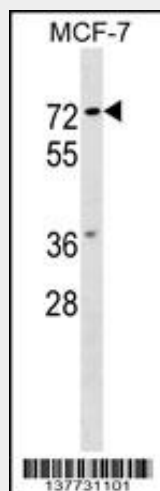
**Tissue Location**

Rarely expressed in adult normal tissues.

**NOTUM Antibody (C-term) - Protocols**

Provided below are standard protocols that you may find useful for product applications.

- [Western Blot](#)
- [Blocking Peptides](#)
- [Dot Blot](#)
- [Immunohistochemistry](#)
- [Immunofluorescence](#)
- [Immunoprecipitation](#)
- [Flow Cytometry](#)
- [Cell Culture](#)

**NOTUM Antibody (C-term) - Images**

NOTUM Antibody (C-term) (Cat. #AP17837b) western blot analysis in MCF-7 cell line lysates (35ug/lane). This demonstrates the NOTUM antibody detected the NOTUM protein (arrow).

**NOTUM Antibody (C-term) - Background**

NOTUM may deacetylate GlcNAc residues on cell surface glycans (Potential).

**NOTUM Antibody (C-term) - References**

Torisu, Y., et al. Cancer Sci. 99(6):1139-1146(2008)  
Lamesch, P., et al. Genomics 89(3):307-315(2007)