

**DHRS1 Antibody (Center)**  
**Affinity Purified Rabbit Polyclonal Antibody (Pab)**  
**Catalog # AP17869c**

**Specification**

---

**DHRS1 Antibody (Center) - Product Information**

Application	WB,E
Primary Accession	<a href="#">O96LJ7</a>
Other Accession	<a href="#">NP_001129522.1</a> , <a href="#">NP_612461.1</a>
Reactivity	Human
Host	Rabbit
Clonality	Polyclonal
Isotype	Rabbit IgG
Calculated MW	33909
Antigen Region	183-209

**DHRS1 Antibody (Center) - Additional Information**

**Gene ID** 115817

**Other Names**

Dehydrogenase/reductase SDR family member 1, 11--, DHRS1

**Target/Specificity**

This DHRS1 antibody is generated from rabbits immunized with a KLH conjugated synthetic peptide between 183-209 amino acids from the Central region of human DHRS1.

**Dilution**

WB~~1:1000

**Format**

Purified polyclonal antibody supplied in PBS with 0.09% (W/V) sodium azide. This antibody is purified through a protein A column, followed by peptide affinity purification.

**Storage**

Maintain refrigerated at 2-8°C for up to 2 weeks. For long term storage store at -20°C in small aliquots to prevent freeze-thaw cycles.

**Precautions**

DHRS1 Antibody (Center) is for research use only and not for use in diagnostic or therapeutic procedures.

**DHRS1 Antibody (Center) - Protein Information**

**Name** DHRS1 ([HGNC:16445](#))

**Synonyms** SDR19C1

**Function** NADPH-dependent oxidoreductase which catalyzes the reduction of steroids (estrone, androstene-3,17-dione and cortisone) as well as prostaglandin E1, isatin and xenobiotics in vitro (PubMed:[30031147](#)). May have a role in steroid and/or xenobiotic metabolism (PubMed:[30031147](#)).

**Cellular Location**

Endoplasmic reticulum. Note=May be attached to the ER membrane by its C-terminus segment.

**Tissue Location**

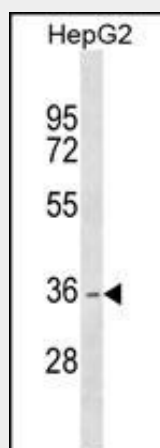
Detected in heart, liver, adrenal glands, and at low levels in skeletal muscle, kidney, pancreas and brain

**DHRS1 Antibody (Center) - Protocols**

Provided below are standard protocols that you may find useful for product applications.

- [Western Blot](#)
- [Blocking Peptides](#)
- [Dot Blot](#)
- [Immunohistochemistry](#)
- [Immunofluorescence](#)
- [Immunoprecipitation](#)
- [Flow Cytometry](#)
- [Cell Culture](#)

**DHRS1 Antibody (Center) - Images**



DHRS1 Antibody (Center) (Cat. #AP17869c) western blot analysis in HepG2 cell line lysates (35ug/lane). This demonstrates the DHRS1 antibody detected the DHRS1 protein (arrow).

**DHRS1 Antibody (Center) - Background**

This gene encodes a member of the short-chain dehydrogenases/reductases (SDR) family. The encoded enzyme contains a conserved catalytic domain and likely functions as an oxidoreductase. Multiple alternatively spliced variants, encoding the same protein, have been identified.

**DHRS1 Antibody (Center) - References**

Persson, B., et al. Chem. Biol. Interact. 178 (1-3), 94-98 (2009) :  
Wu, Q., et al. Mol. Biol. Rep. 28(4):193-198(2001)