

**CD40 Antibody (C-term)**  
**Affinity Purified Rabbit Polyclonal Antibody (Pab)**  
**Catalog # AP17871b****Specification**

---

**CD40 Antibody (C-term) - Product Information**

Application	WB,E
Primary Accession	<a href="#">P25942</a>
Other Accession	<a href="#">Q8SQ34</a> , <a href="#">P27512</a> , <a href="#">NP_001241.1</a> , <a href="#">Q3ZTK5</a>
Reactivity	Human
Predicted	Horse, Mouse, Pig
Host	Rabbit
Clonality	Polyclonal
Isotype	Rabbit IgG
Calculated MW	30619
Antigen Region	247-276

**CD40 Antibody (C-term) - Additional Information****Gene ID** 958**Other Names**

Tumor necrosis factor receptor superfamily member 5, B-cell surface antigen CD40, Bp50, CD40L receptor, CDw40, CD40, CD40, TNFRSF5

**Target/Specificity**

This CD40 antibody is generated from rabbits immunized with a KLH conjugated synthetic peptide between 247-276 amino acids from the C-terminal region of human CD40.

**Dilution**

WB~~1:1000

**Format**

Purified polyclonal antibody supplied in PBS with 0.09% (W/V) sodium azide. This antibody is purified through a protein A column, followed by peptide affinity purification.

**Storage**

Maintain refrigerated at 2-8°C for up to 2 weeks. For long term storage store at -20°C in small aliquots to prevent freeze-thaw cycles.

**Precautions**

CD40 Antibody (C-term) is for research use only and not for use in diagnostic or therapeutic procedures.

**CD40 Antibody (C-term) - Protein Information****Name** CD40

**Synonyms** TNFRSF5

**Function** Receptor for TNFSF5/CD40LG (PubMed:[31331973](#)). Transduces TRAF6- and MAP3K8-mediated signals that activate ERK in macrophages and B cells, leading to induction of immunoglobulin secretion (By similarity).

**Cellular Location**

[Isoform I]: Cell membrane; Single-pass type I membrane protein

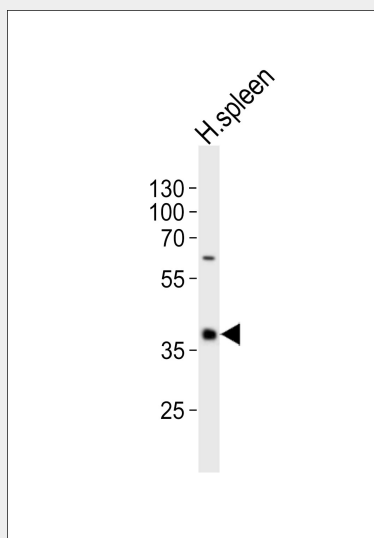
**Tissue Location**

B-cells and in primary carcinomas.

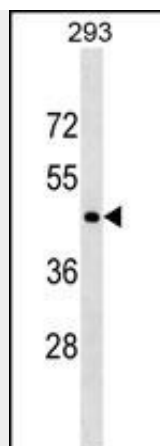
**CD40 Antibody (C-term) - Protocols**

Provided below are standard protocols that you may find useful for product applications.

- [Western Blot](#)
- [Blocking Peptides](#)
- [Dot Blot](#)
- [Immunohistochemistry](#)
- [Immunofluorescence](#)
- [Immunoprecipitation](#)
- [Flow Cytometry](#)
- [Cell Culture](#)

**CD40 Antibody (C-term) - Images**

Western blot analysis of lysate from human spleen tissue lysate, using CD40 Antibody (C-term)(Cat. #AP17871B). AP17871B was diluted at 1:1000. A goat anti-rabbit IgG H&L(HRP) at 1:10000 dilution was used as the secondary antibody. Lysate at 20ug.



CD40 Antibody (C-term) (Cat. #AP17871b) western blot analysis in 293 cell line lysates (35ug/lane). This demonstrates the CD40 antibody detected the CD40 protein (arrow).

#### CD40 Antibody (C-term) - Background

The protein encoded by this gene is a member of the TNF-receptor superfamily. This receptor has been found to be essential in mediating a broad variety of immune and inflammatory responses including T cell-dependent immunoglobulin class switching, memory B cell development, and germinal center formation. AT-hook transcription factor AKNA is reported to coordinately regulate the expression of this receptor and its ligand, which may be important for homotypic cell interactions. Adaptor protein TNFR2 interacts with this receptor and serves as a mediator of the signal transduction. The interaction of this receptor and its ligand is found to be necessary for amyloid-beta-induced microglial activation, and thus is thought to be an early event in Alzheimer disease pathogenesis. Two alternatively spliced transcript variants of this gene encoding distinct isoforms have been reported.

#### CD40 Antibody (C-term) - References

Rodriguez-Rodriguez, L., et al. J. Rheumatol. 37(10):2076-2080(2010)  
Lewis, J.P., et al. Genomics 96(4):211-219(2010)  
Bailey, S.D., et al. Diabetes Care 33(10):2250-2253(2010)  
Blanco-Kelly, F., et al. PLoS ONE 5 (7), E11520 (2010) :  
Soliman, M.A., et al. Egypt J Immunol 16(1):61-70(2009)