

ALG5 Antibody (Center)
Affinity Purified Rabbit Polyclonal Antibody (Pab)
Catalog # AP17876C**Specification**

ALG5 Antibody (Center) - Product Information

Application	WB,E
Primary Accession	O9Y673
Other Accession	NP_037470.1
Reactivity	Human
Host	Rabbit
Clonality	Polyclonal
Isotype	Rabbit IgG
Calculated MW	36946
Antigen Region	74-100

ALG5 Antibody (Center) - Additional Information**Gene ID** 29880**Other Names**

Dolichyl-phosphate beta-glucosyltransferase, DoIP-glucosyltransferase, Asparagine-linked glycosylation protein 5 homolog, ALG5

Target/Specificity

This ALG5 antibody is generated from rabbits immunized with a KLH conjugated synthetic peptide between 74-100 amino acids from the Central region of human ALG5.

Dilution

WB~~1:1000

Format

Purified polyclonal antibody supplied in PBS with 0.09% (W/V) sodium azide. This antibody is purified through a protein A column, followed by peptide affinity purification.

Storage

Maintain refrigerated at 2-8°C for up to 2 weeks. For long term storage store at -20°C in small aliquots to prevent freeze-thaw cycles.

Precautions

ALG5 Antibody (Center) is for research use only and not for use in diagnostic or therapeutic procedures.

ALG5 Antibody (Center) - Protein Information**Name** ALG5**Function** Required for the assembly of lipid-linked oligosaccharides in kidney epithelial cells, and

protein N-glycosylation. Required for polycystin-1 (PKD1) glycosylation and maturation.

Cellular Location

Endoplasmic reticulum membrane; Single-pass type II membrane protein

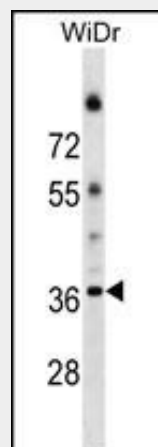
Tissue Location

Expressed in pancreas, placenta, liver, heart, brain, kidney, skeletal muscle, and lung

ALG5 Antibody (Center) - Protocols

Provided below are standard protocols that you may find useful for product applications.

- [Western Blot](#)
- [Blocking Peptides](#)
- [Dot Blot](#)
- [Immunohistochemistry](#)
- [Immunofluorescence](#)
- [Immunoprecipitation](#)
- [Flow Cytometry](#)
- [Cell Culture](#)

ALG5 Antibody (Center) - Images

ALG5 Antibody (Center) (Cat. #AP17876c) western blot analysis in WiDr cell line lysates (35ug/lane). This demonstrates the ALG5 antibody detected the ALG5 protein (arrow).

ALG5 Antibody (Center) - Background

This gene encodes a member of the glycosyltransferase 2 family. The encoded protein participates in glucosylation of the oligomannose core in N-linked glycosylation of proteins. The addition of glucose residues to the oligomannose core is necessary to ensure substrate recognition, and therefore, effectual transfer of the oligomannose core to the nascent glycoproteins. Multiple transcript variants encoding different isoforms have been found for this gene.

ALG5 Antibody (Center) - References

Imbach, T., et al. Proc. Natl. Acad. Sci. U.S.A. 96(12):6982-6987(1999)