

**MSC Antibody (C-term)**  
**Affinity Purified Rabbit Polyclonal Antibody (Pab)**  
**Catalog # AP17919b****Specification**

---

**MSC Antibody (C-term) - Product Information**

Application	WB,E
Primary Accession	<a href="#">O60682</a>
Other Accession	<a href="#">NP_005089.2</a>
Reactivity	Human, Mouse
Host	Rabbit
Clonality	Polyclonal
Isotype	Rabbit IgG
Calculated MW	22068
Antigen Region	166-194

**MSC Antibody (C-term) - Additional Information****Gene ID** 9242**Other Names**

Musculin, Activated B-cell factor 1, ABF-1, Class A basic helix-loop-helix protein 22, bHLHa22, MSC, ABF1, BHLHA22

**Target/Specificity**

This MSC antibody is generated from rabbits immunized with a KLH conjugated synthetic peptide between 166-194 amino acids from the C-terminal region of human MSC.

**Dilution**

WB~~1:1000

**Format**

Purified polyclonal antibody supplied in PBS with 0.09% (W/V) sodium azide. This antibody is purified through a protein A column, followed by peptide affinity purification.

**Storage**

Maintain refrigerated at 2-8°C for up to 2 weeks. For long term storage store at -20°C in small aliquots to prevent freeze-thaw cycles.

**Precautions**

MSC Antibody (C-term) is for research use only and not for use in diagnostic or therapeutic procedures.

**MSC Antibody (C-term) - Protein Information****Name** MSC**Synonyms** ABF1, BHLHA22

**Function** Transcription repressor capable of inhibiting the transactivation capability of TCF3/E47. May play a role in regulating antigen-dependent B-cell differentiation.

**Cellular Location**

Nucleus.

**Tissue Location**

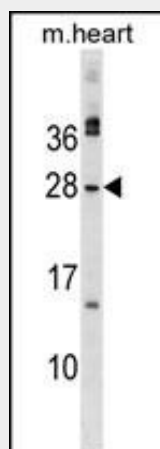
Expressed in lymphoid tissues, B-cell lines and activated B-cells

**MSC Antibody (C-term) - Protocols**

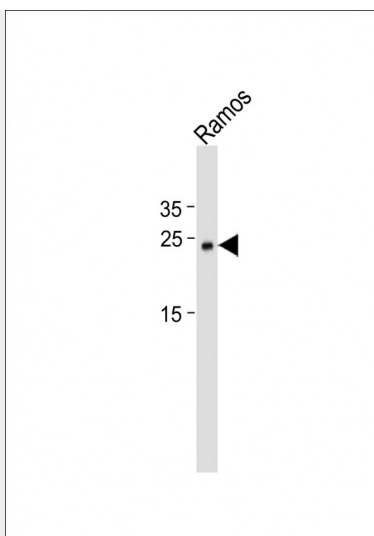
Provided below are standard protocols that you may find useful for product applications.

- [Western Blot](#)
- [Blocking Peptides](#)
- [Dot Blot](#)
- [Immunohistochemistry](#)
- [Immunofluorescence](#)
- [Immunoprecipitation](#)
- [Flow Cytometry](#)
- [Cell Culture](#)

**MSC Antibody (C-term) - Images**



MSC Antibody (C-term) (Cat. #AP17919b) western blot analysis in mouse heart tissue lysates (35ug/lane). This demonstrates the MSC antibody detected the MSC protein (arrow).



Anti- MSC Antibody (C-term) at 1:1000 dilution + Ramos whole cell lysates Lysates/proteins at 20 µg per lane. Secondary Goat Anti-Rabbit IgG, (H+L), Peroxidase conjugated at 1/10000 dilution  
Predicted band size : 22 kDa Blocking/Dilution buffer: 5% NFDM/TBST.

#### **MSC Antibody (C-term) - Background**

The protein encoded by this gene is a transcriptional repressor capable of binding an E-box element either as a homodimer or as a heterodimer with E2A in vitro. The encoded protein also forms heterodimers with E2A proteins in vivo. This protein is capable of inhibiting the transactivation capability of E47, an E2A protein, in mammalian cells. This gene is a downstream target of the B-cell receptor signal transduction pathway. [provided by RefSeq].

#### **MSC Antibody (C-term) - References**

Jugessur, A., et al. PLoS ONE 5 (7), E11493 (2010) :  
Ushmorov, A., et al. Leukemia 22(10):1942-1944(2008)  
Knight, J.C., et al. Nat. Genet. 36(4):394-399(2004)  
Wong, J., et al. DNA Cell Biol. 20(8):465-471(2001)  
Robb, L., et al. Genomics 57(2):318-319(1999)