

**RNF207 Antibody (C-term)**  
**Affinity Purified Rabbit Polyclonal Antibody (Pab)**  
**Catalog # AP17923B**

**Specification**

---

**RNF207 Antibody (C-term) - Product Information**

Application	WB,E
Primary Accession	<a href="#">Q6ZRF8</a>
Other Accession	<a href="#">NP_997279.2</a>
Reactivity	Human, Mouse
Host	Rabbit
Clonality	Polyclonal
Isotype	Rabbit IgG
Antigen Region	528-555

**RNF207 Antibody (C-term) - Additional Information**

**Gene ID** 388591

**Other Names**

RING finger protein 207, RNF207, C1orf188

**Target/Specificity**

This RNF207 antibody is generated from rabbits immunized with a KLH conjugated synthetic peptide between 528-555 amino acids from the C-terminal region of human RNF207.

**Dilution**

WB~~1:1000

**Format**

Purified polyclonal antibody supplied in PBS with 0.09% (W/V) sodium azide. This antibody is purified through a protein A column, followed by peptide affinity purification.

**Storage**

Maintain refrigerated at 2-8°C for up to 2 weeks. For long term storage store at -20°C in small aliquots to prevent freeze-thaw cycles.

**Precautions**

RNF207 Antibody (C-term) is for research use only and not for use in diagnostic or therapeutic procedures.

**RNF207 Antibody (C-term) - Protein Information**

**Name** RNF207

**Synonyms** C1orf188

**Function** Plays a role in cardiac repolarization possibly by stabilizing membrane expression of the

potassium channel KCNH2/HERG, or by assisting its synthesis, folding or export from the endoplasmic reticulum, in a heat shock protein-dependent manner.

#### **Cellular Location**

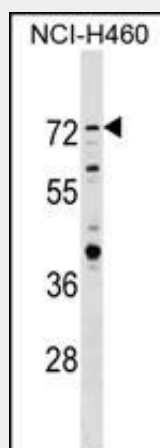
Cytoplasm. Note=Probably located in the endoplasmic reticulum and/or possibly the cis-Golgi apparatus.

#### **RNF207 Antibody (C-term) - Protocols**

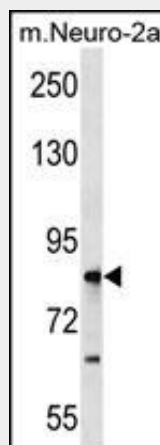
Provided below are standard protocols that you may find useful for product applications.

- [Western Blot](#)
- [Blocking Peptides](#)
- [Dot Blot](#)
- [Immunohistochemistry](#)
- [Immunofluorescence](#)
- [Immunoprecipitation](#)
- [Flow Cytometry](#)
- [Cell Culture](#)

#### **RNF207 Antibody (C-term) - Images**



RNF207 Antibody (C-term) (Cat. #AP17923b) western blot analysis in NCI-H460 cell line lysates (35ug/lane). This demonstrates the RNF207 antibody detected the RNF207 protein (arrow).



RNF207 Antibody (C-term) (Cat. #AP17923b) western blot analysis in mouse Neuro-2a tissue lysates (35ug/lane). This demonstrates the antibody detected the protein (arrow).

**RNF207 Antibody (C-term) - Background**

The function of this protein remains unknown.

**RNF207 Antibody (C-term) - References**

Pfeufer, A., et al. Nat. Genet. 41(4):407-414(2009)  
Newton-Cheh, C., et al. Nat. Genet. 41(4):399-406(2009)  
Wistow, G., et al. Mol. Vis. 8, 171-184 (2002) :