

DHRS11 Antibody (Center)
Affinity Purified Rabbit Polyclonal Antibody (Pab)
Catalog # AP17926c**Specification**

DHRS11 Antibody (Center) - Product Information

Application	WB,E
Primary Accession	Q6UWP2
Other Accession	NP_077284.2
Reactivity	Human
Host	Rabbit
Clonality	Polyclonal
Isotype	Rabbit IgG
Calculated MW	28308
Antigen Region	115-142

DHRS11 Antibody (Center) - Additional Information**Gene ID** 79154**Other Names**

Dehydrogenase/reductase SDR family member 11, 1---, DHRS11

Target/Specificity

This DHRS11 antibody is generated from rabbits immunized with a KLH conjugated synthetic peptide between 115-142 amino acids from the Central region of human DHRS11.

Dilution

WB~~1:1000

Format

Purified polyclonal antibody supplied in PBS with 0.09% (W/V) sodium azide. This antibody is purified through a protein A column, followed by peptide affinity purification.

Storage

Maintain refrigerated at 2-8°C for up to 2 weeks. For long term storage store at -20°C in small aliquots to prevent freeze-thaw cycles.

Precautions

DHRS11 Antibody (Center) is for research use only and not for use in diagnostic or therapeutic procedures.

DHRS11 Antibody (Center) - Protein Information**Name** DHRS11**Synonyms** SDR24C1 {ECO:0000303|PubMed:19027726}

Function Catalyzes the conversion of the 17-keto group of estrone, 4- and 5-androstenes and 5-alpha-androstanes into their 17-beta- hydroxyl metabolites and the conversion of the 3-keto group of 3-, 3,17- and 3,20- diketosteroids into their 3-hydroxyl metabolites. Exhibits reductive 3-beta-hydroxysteroid dehydrogenase activity toward 5-beta-androstanes, 5-beta-pregnanes, 4-pregnanes and bile acids. May also reduce endogenous and exogenous alpha-dicarbonyl compounds and xenobiotic alicyclic ketones.

Cellular Location
Secreted.

Tissue Location

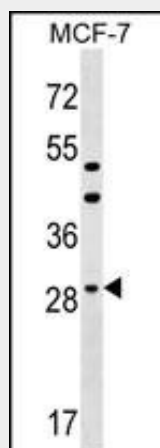
Isoform 1: Ubiquitously expressed, with highest levels in testis, small intestine, colon, kidney, brain and heart Isoform 3: Expressed in brain, heart and skeletal muscle

DHRS11 Antibody (Center) - Protocols

Provided below are standard protocols that you may find useful for product applications.

- [Western Blot](#)
- [Blocking Peptides](#)
- [Dot Blot](#)
- [Immunohistochemistry](#)
- [Immunofluorescence](#)
- [Immunoprecipitation](#)
- [Flow Cytometry](#)
- [Cell Culture](#)

DHRS11 Antibody (Center) - Images



DHRS11 Antibody (Center) (Cat. #AP17926c) western blot analysis in MCF-7 cell line lysates (35ug/lane). This demonstrates the DHRS11 antibody detected the DHRS11 protein (arrow).

DHRS11 Antibody (Center) - Background

The function of this protein remains unknown.

DHRS11 Antibody (Center) - References

Persson, B., et al. Chem. Biol. Interact. 178 (1-3), 94-98 (2009) :
Clark, H.F., et al. Genome Res. 13(10):2265-2270(2003)