

ARMC1 Antibody (C-term)
Affinity Purified Rabbit Polyclonal Antibody (Pab)
Catalog # AP17956b**Specification**

ARMC1 Antibody (C-term) - Product Information

Application	WB,E
Primary Accession	Q9NVT9
Other Accession	Q9D7A8 , Q3ZBE1 , NP_060590.1
Reactivity	Human
Predicted	Bovine, Mouse
Host	Rabbit
Clonality	Polyclonal
Isotype	Rabbit IgG
Calculated MW	31281
Antigen Region	223-249

ARMC1 Antibody (C-term) - Additional Information**Gene ID** 55156**Other Names**

Armadillo repeat-containing protein 1, ARMC1, ARCP

Target/Specificity

This ARMC1 antibody is generated from rabbits immunized with a KLH conjugated synthetic peptide between 223-249 amino acids from the C-terminal region of human ARMC1.

Dilution

WB~~1:1000

Format

Purified polyclonal antibody supplied in PBS with 0.09% (W/V) sodium azide. This antibody is purified through a protein A column, followed by peptide affinity purification.

Storage

Maintain refrigerated at 2-8°C for up to 2 weeks. For long term storage store at -20°C in small aliquots to prevent freeze-thaw cycles.

Precautions

ARMC1 Antibody (C-term) is for research use only and not for use in diagnostic or therapeutic procedures.

ARMC1 Antibody (C-term) - Protein Information**Name** ARMC1**Synonyms** ARCP

Function In association with mitochondrial contact site and cristae organizing system (MICOS) complex components and mitochondrial outer membrane sorting assembly machinery (SAM) complex components may regulate mitochondrial dynamics playing a role in determining mitochondrial length, distribution and motility.

Cellular Location

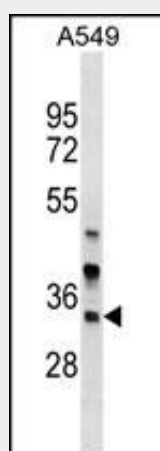
Cytoplasm. Mitochondrion. Mitochondrion outer membrane. Note=Associates with the outer mitochondrion membrane, most likely through its C-terminus (PubMed:31644573). Not integrated into the mitochondrial outer membrane (PubMed:31644573).

ARMC1 Antibody (C-term) - Protocols

Provided below are standard protocols that you may find useful for product applications.

- [Western Blot](#)
- [Blocking Peptides](#)
- [Dot Blot](#)
- [Immunohistochemistry](#)
- [Immunofluorescence](#)
- [Immunoprecipitation](#)
- [Flow Cytometry](#)
- [Cell Culture](#)

ARMC1 Antibody (C-term) - Images



ARMC1 Antibody (C-term) (Cat. #AP17956b) western blot analysis in A549 cell line lysates (35ug/lane). This demonstrates the ARMC1 antibody detected the ARMC1 protein (arrow).

ARMC1 Antibody (C-term) - Background

ARMC1 contains an armadillo repeat. Armadillo repeat proteins contain tandem copies of a degenerate protein sequence motif that forms a conserved three-dimensional structure. Armadillo repeat proteins function in various processes, including intracellular signalling and cytoskeletal regulation. The specific function of ARMC1 is unknown.

ARMC1 Antibody (C-term) - References

Rose, J.E., et al. Mol. Med. 16 (7-8), 247-253 (2010) :
Lamesch, P., et al. Genomics 89(3):307-315(2007)