

CIB3 Antibody (N-term)
Affinity Purified Rabbit Polyclonal Antibody (Pab)
Catalog # AP17961A**Specification**

CIB3 Antibody (N-term) - Product Information

Application	WB,E
Primary Accession	O96Q77
Other Accession	NP_473454.1
Reactivity	Human
Host	Rabbit
Clonality	Polyclonal
Isotype	Rabbit IgG
Calculated MW	21802
Antigen Region	8-34

CIB3 Antibody (N-term) - Additional Information**Gene ID** 117286**Other Names**

Calcium and integrin-binding family member 3, Kinase-interacting protein 3, KIP 3, CIB3, KIP3

Target/Specificity

This CIB3 antibody is generated from rabbits immunized with a KLH conjugated synthetic peptide between 8-34 amino acids from the N-terminal region of human CIB3.

Dilution

WB~~1:1000

Format

Purified polyclonal antibody supplied in PBS with 0.09% (W/V) sodium azide. This antibody is purified through a protein A column, followed by peptide affinity purification.

Storage

Maintain refrigerated at 2-8°C for up to 2 weeks. For long term storage store at -20°C in small aliquots to prevent freeze-thaw cycles.

Precautions

CIB3 Antibody (N-term) is for research use only and not for use in diagnostic or therapeutic procedures.

CIB3 Antibody (N-term) - Protein Information**Name** CIB3**Synonyms** KIP3

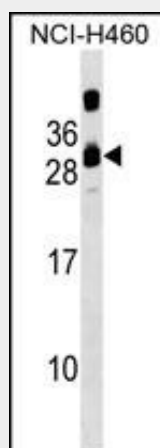
Function Acts as an auxiliary subunit of the sensory mechanoelectrical transduction (MET) channel in hair cells (By similarity). Plays a role in regulating hair cell MET channel localization and function (By similarity).

CIB3 Antibody (N-term) - Protocols

Provided below are standard protocols that you may find useful for product applications.

- [Western Blot](#)
- [Blocking Peptides](#)
- [Dot Blot](#)
- [Immunohistochemistry](#)
- [Immunofluorescence](#)
- [Immunoprecipitation](#)
- [Flow Cytometry](#)
- [Cell Culture](#)

CIB3 Antibody (N-term) - Images



CIB3 Antibody (N-term) (Cat. #AP17961a) western blot analysis in NCI-H460 cell line lysates (35ug/lane). This demonstrates the CIB3 antibody detected the CIB3 protein (arrow).

CIB3 Antibody (N-term) - Background

This gene product shares a high degree of sequence similarity with DNA-dependent protein kinase catalytic subunit-interacting protein 2 in human and mouse, and like them may bind the catalytic subunit of DNA-dependent protein kinases. The exact function of this gene is not known.

CIB3 Antibody (N-term) - References

Gentry, H.R., et al. J. Biol. Chem. 280(9):8407-8415(2005)