

**CPNE5 Antibody (C-term)**  
**Affinity Purified Rabbit Polyclonal Antibody (Pab)**  
**Catalog # AP17963b****Specification**

---

**CPNE5 Antibody (C-term) - Product Information**

Application	WB,E
Primary Accession	<a href="#">Q9HCH3</a>
Other Accession	<a href="#">Q8JZW4</a> , <a href="#">NP_065990.1</a>
Reactivity	Human
Predicted	Mouse
Host	Rabbit
Clonality	Polyclonal
Isotype	Rabbit IgG
Calculated MW	65734
Antigen Region	509-535

**CPNE5 Antibody (C-term) - Additional Information****Gene ID** 57699**Other Names**

Copine-5, Copine V, CPNE5, KIAA1599

**Target/Specificity**

This CPNE5 antibody is generated from rabbits immunized with a KLH conjugated synthetic peptide between 509-535 amino acids from the C-terminal region of human CPNE5.

**Dilution**

WB~~1:1000

**Format**

Purified polyclonal antibody supplied in PBS with 0.09% (W/V) sodium azide. This antibody is purified through a protein A column, followed by peptide affinity purification.

**Storage**

Maintain refrigerated at 2-8°C for up to 2 weeks. For long term storage store at -20°C in small aliquots to prevent freeze-thaw cycles.

**Precautions**

CPNE5 Antibody (C-term) is for research use only and not for use in diagnostic or therapeutic procedures.

**CPNE5 Antibody (C-term) - Protein Information****Name** CPNE5 ([HGNC:2318](#))**Function** Probable calcium-dependent phospholipid-binding protein that may play a role in

calcium-mediated intracellular processes (By similarity). Plays a role in dendrite formation by melanocytes (PubMed:[23999003](#)).

#### **Cellular Location**

Perikaryon {ECO:0000250|UniProtKB:Q8JZW4}. Cell projection {ECO:0000250|UniProtKB:Q8JZW4}

#### **Tissue Location**

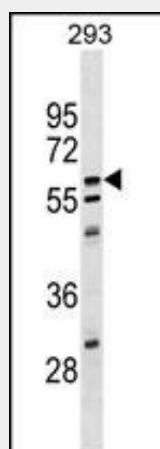
Expressed in the brain, heart, stomach, spleen, lymph node and testis (PubMed:12949241).  
Expressed in melanocytes (PubMed:23999003).

### **CPNE5 Antibody (C-term) - Protocols**

Provided below are standard protocols that you may find useful for product applications.

- [Western Blot](#)
- [Blocking Peptides](#)
- [Dot Blot](#)
- [Immunohistochemistry](#)
- [Immunofluorescence](#)
- [Immunoprecipitation](#)
- [Flow Cytometry](#)
- [Cell Culture](#)

### **CPNE5 Antibody (C-term) - Images**



CPNE5 Antibody (C-term) (Cat. #AP17963b) western blot analysis in 293 cell line lysates (35ug/lane). This demonstrates the CPNE5 antibody detected the CPNE5 protein (arrow).

### **CPNE5 Antibody (C-term) - Background**

Calcium-dependent membrane-binding proteins may regulate molecular events at the interface of the cell membrane and cytoplasm. This gene is one of several genes that encode a calcium-dependent protein containing two N-terminal type II C2 domains and an integrin A domain-like sequence in the C-terminus. Sequence analysis identified multiple alternatively spliced transcript variants but their full-length natures could not be determined.

### **CPNE5 Antibody (C-term) - References**

Rose, J.E., et al. Mol. Med. 16 (7-8), 247-253 (2010) :  
Mungall, A.J., et al. Nature 425(6960):805-811(2003)  
Tripodis, N., et al. Genome Res. 8(6):631-643(1998)  
Creutz, C.E., et al. J. Biol. Chem. 273(3):1393-1402(1998)