

**Erythropoietin Antibody (C-term)**  
**Purified Rabbit Polyclonal Antibody (Pab)**  
**Catalog # AP17987b****Specification**

---

**Erythropoietin Antibody (C-term) - Product Information**

Application	WB,E
Primary Accession	<a href="#">P01588</a>
Other Accession	<a href="#">P29676</a> , <a href="#">P07865</a> , <a href="#">NP_000790</a>
Reactivity	Human
Predicted	Monkey, Rat
Host	Rabbit
Clonality	Polyclonal
Isotype	Rabbit IgG
Calculated MW	30-35K KDa
Antigen Region	155-184

**Erythropoietin Antibody (C-term) - Additional Information****Gene ID** 2056**Other Names**

Erythropoietin, Epoetin, EPO

**Target/Specificity**

This Erythropoietin antibody is generated from rabbits immunized with a KLH conjugated synthetic peptide between 155-184 amino acids from the C-terminal region of human Erythropoietin.

**Dilution**

WB~~1:1000

**Format**

Purified polyclonal antibody supplied in PBS with 0.09% (W/V) sodium azide. This antibody is prepared by Saturated Ammonium Sulfate (SAS) precipitation followed by dialysis against PBS.

**Storage**

Maintain refrigerated at 2-8°C for up to 2 weeks. For long term storage store at -20°C in small aliquots to prevent freeze-thaw cycles.

**Precautions**

Erythropoietin Antibody (C-term) is for research use only and not for use in diagnostic or therapeutic procedures.

**Erythropoietin Antibody (C-term) - Protein Information****Name** EPO**Function** Hormone involved in the regulation of erythrocyte proliferation and differentiation and

the maintenance of a physiological level of circulating erythrocyte mass. Binds to EPOR leading to EPOR dimerization and JAK2 activation thereby activating specific downstream effectors, including STAT1 and STAT3.

**Cellular Location**

Secreted.

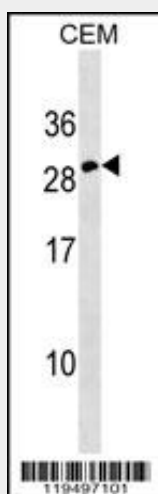
**Tissue Location**

Produced by kidney or liver of adult mammals and by liver of fetal or neonatal mammals

**Erythropoietin Antibody (C-term) - Protocols**

Provided below are standard protocols that you may find useful for product applications.

- [Western Blot](#)
- [Blocking Peptides](#)
- [Dot Blot](#)
- [Immunohistochemistry](#)
- [Immunofluorescence](#)
- [Immunoprecipitation](#)
- [Flow Cytometry](#)
- [Cell Culture](#)

**Erythropoietin Antibody (C-term) - Images**

Erythropoietin Antibody (C-term) (Cat. #AP17987b) western blot analysis in CEM cell line lysates (35ug/lane). This demonstrates the Erythropoietin antibody detected the Erythropoietin protein (arrow).

**Erythropoietin Antibody (C-term) - Background**

This gene is a member of the EPO/TPO family and encodes a secreted, glycosylated cytokine composed of four alpha helical bundles. The protein is found in the plasma and regulates red cell production by promoting erythroid differentiation and initiating hemoglobin synthesis. This protein also has neuroprotective activity against a variety of potential brain injuries and antiapoptotic functions in several tissue types. [provided by RefSeq].

**Erythropoietin Antibody (C-term) - References**

Bailey, S.D., et al. Diabetes Care 33(10):2250-2253(2010)  
Kristensen, P.L., et al. Eur. J. Endocrinol. 163(3):391-398(2010)  
Kim, M.H., et al. Mol. Biol. (Mosk.) 44(4):656-663(2010)  
Carraway, M.S., et al. Circ. Res. 106(11):1722-1730(2010)  
Shi, Z., et al. Mol. Cancer Res. 8(4):615-626(2010)