

LHFP Antibody (N-term)
Affinity Purified Rabbit Polyclonal Antibody (Pab)
Catalog # AP18018a**Specification**

LHFP Antibody (N-term) - Product Information

Application	WB,E
Primary Accession	Q9Y693
Other Accession	Q5BJS2 , Q8BM86 , NP_005771.1
Reactivity	Human
Predicted	Mouse, Rat
Host	Rabbit
Clonality	Polyclonal
Isotype	Rabbit IgG
Calculated MW	21598
Antigen Region	21-49

LHFP Antibody (N-term) - Additional Information**Gene ID** 10186**Other Names**

Lipoma HMGIC fusion partner, LHFP

Target/Specificity

This LHFP antibody is generated from rabbits immunized with a KLH conjugated synthetic peptide between 21-49 amino acids from the N-terminal region of human LHFP.

Dilution

WB~~1:1000

Format

Purified polyclonal antibody supplied in PBS with 0.09% (W/V) sodium azide. This antibody is purified through a protein A column, followed by peptide affinity purification.

Storage

Maintain refrigerated at 2-8°C for up to 2 weeks. For long term storage store at -20°C in small aliquots to prevent freeze-thaw cycles.

Precautions

LHFP Antibody (N-term) is for research use only and not for use in diagnostic or therapeutic procedures.

LHFP Antibody (N-term) - Protein Information**Name** LHFPL6 ([HGNC:6586](#))**Cellular Location**

Membrane; Multi-pass membrane protein

Tissue Location

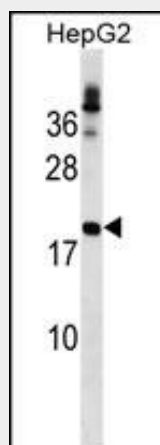
Pancreas, kidney, skeletal muscle, liver, lung brain, heart, colon, small intestine, uterus, testis, prostate, thymus, spleen and placenta.

LHFP Antibody (N-term) - Protocols

Provided below are standard protocols that you may find useful for product applications.

- [Western Blot](#)
- [Blocking Peptides](#)
- [Dot Blot](#)
- [Immunohistochemistry](#)
- [Immunofluorescence](#)
- [Immunoprecipitation](#)
- [Flow Cytometry](#)
- [Cell Culture](#)

LHFP Antibody (N-term) - Images



LHFP Antibody (N-term) (Cat. #AP18018a) western blot analysis in HepG2 cell line lysates (35ug/lane). This demonstrates the LHFP antibody detected the LHFP protein (arrow).

LHFP Antibody (N-term) - Background

This gene is a member of the lipoma HMGIC fusion partner (LHFP) gene family, which is a subset of the superfamily of tetraspan transmembrane protein encoding genes. This gene is fused to a high-mobility group gene in a translocation-associated lipoma. Mutations in another LHFP-like gene result in deafness in humans and mice. Alternatively spliced transcript variants have been found; however, their full-length nature is not known. [provided by RefSeq].

LHFP Antibody (N-term) - References

Longo-Guess, C.M., et al. Proc. Natl. Acad. Sci. U.S.A. 102(22):7894-7899(2005)
Dunham, A., et al. Nature 428(6982):522-528(2004)
Petit, M.M., et al. Genomics 57(3):438-441(1999)