

ECSCR Antibody (C-term)
Affinity Purified Rabbit Polyclonal Antibody (Pab)
Catalog # AP18022b**Specification**

ECSCR Antibody (C-term) - Product Information

Application	WB,E
Primary Accession	Q19T08
Other Accession	NP_001071161.1
Reactivity	Human
Host	Rabbit
Clonality	Polyclonal
Isotype	Rabbit IgG
Calculated MW	21295
Antigen Region	137-165

ECSCR Antibody (C-term) - Additional Information**Gene ID** 641700**Other Names**

Endothelial cell-specific chemotaxis regulator, Apoptosis regulator through modulating IAP expression, ARIA, Endothelial cell-specific molecule 2, ECSCR, ECSM2

Target/Specificity

This ECSCR antibody is generated from rabbits immunized with a KLH conjugated synthetic peptide between 137-165 amino acids from the C-terminal region of human ECSCR.

Dilution

WB~~1:1000

Format

Purified polyclonal antibody supplied in PBS with 0.09% (W/V) sodium azide. This antibody is purified through a protein A column, followed by peptide affinity purification.

Storage

Maintain refrigerated at 2-8°C for up to 2 weeks. For long term storage store at -20°C in small aliquots to prevent freeze-thaw cycles.

Precautions

ECSCR Antibody (C-term) is for research use only and not for use in diagnostic or therapeutic procedures.

ECSCR Antibody (C-term) - Protein Information**Name** ECSCR**Synonyms** ECSM2

Function Regulates endothelial chemotaxis and tube formation. Has a role in angiogenesis and apoptosis via modulation of the actin cytoskeleton and facilitation of proteasomal degradation of the apoptosis inhibitors BIRC3/IAP1 and BIRC2/IAP2.

Cellular Location

Cell membrane; Single-pass type I membrane protein. Cytoplasm

Tissue Location

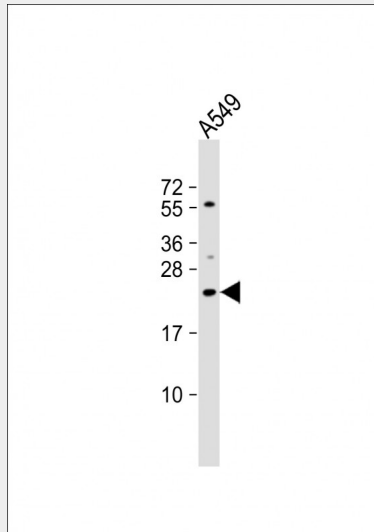
Highest expression in endothelial cells. Also detected in vascular smooth muscle, macrophages, lymphocytes, and mast cells.

ECSCR Antibody (C-term) - Protocols

Provided below are standard protocols that you may find useful for product applications.

- [Western Blot](#)
- [Blocking Peptides](#)
- [Dot Blot](#)
- [Immunohistochemistry](#)
- [Immunofluorescence](#)
- [Immunoprecipitation](#)
- [Flow Cytometry](#)
- [Cell Culture](#)

ECSCR Antibody (C-term) - Images



Anti-ECSCR Antibody (C-term) at 1:1000 dilution + A549 whole cell lysate Lysates/proteins at 20 µg per lane. Secondary Goat Anti-Rabbit IgG, (H+L), Peroxidase conjugated at 1/10000 dilution. Predicted band size : 21 kDa Blocking/Dilution buffer: 5% NFDm/TBST.

ECSCR Antibody (C-term) - Background

The protein encoded by this gene is primarily found in endothelial cells and blood vessels, where it may be involved in cell shape changes and EGF-induced cell migration. This gene could play a role in angiogenesis-related diseases.

ECSCR Antibody (C-term) - References

Ikeda, K., et al. Proc. Natl. Acad. Sci. U.S.A. 106(20):8227-8232(2009)
Ma, F., et al. Genes Cells 14(3):281-293(2009)
Graubert, T.A., et al. PLoS ONE 4 (2), E4583 (2009) :
Armstrong, L.J., et al. Arterioscler. Thromb. Vasc. Biol. 28(9):1640-1646(2008)