

**GLIPR1L1 Antibody (C-term)**  
**Affinity Purified Rabbit Polyclonal Antibody (Pab)**  
**Catalog # AP18024b**

**Specification**

---

**GLIPR1L1 Antibody (C-term) - Product Information**

Application	WB,E
Primary Accession	<a href="#">Q6UWM5</a>
Other Accession	<a href="#">NP_689992.1</a>
Reactivity	Human
Host	Rabbit
Clonality	Polyclonal
Isotype	Rabbit IgG
Calculated MW	27151
Antigen Region	196-224

**GLIPR1L1 Antibody (C-term) - Additional Information**

**Gene ID** 256710

**Other Names**

GLIPR1-like protein 1, GLIPR1L1

**Target/Specificity**

This GLIPR1L1 antibody is generated from rabbits immunized with a KLH conjugated synthetic peptide between 196-224 amino acids from the C-terminal region of human GLIPR1L1.

**Dilution**

WB~~1:1000

**Format**

Purified polyclonal antibody supplied in PBS with 0.09% (W/V) sodium azide. This antibody is purified through a protein A column, followed by peptide affinity purification.

**Storage**

Maintain refrigerated at 2-8°C for up to 2 weeks. For long term storage store at -20°C in small aliquots to prevent freeze-thaw cycles.

**Precautions**

GLIPR1L1 Antibody (C-term) is for research use only and not for use in diagnostic or therapeutic procedures.

**GLIPR1L1 Antibody (C-term) - Protein Information**

**Name** GLIPR1L1

**Function** Required for optimal fertilization at the stage of sperm- oocyte fusion, plays a role in optimizing acrosome function, the translocation of IZUMO1 during the acrosome reaction and the

fertilization process. Component of epididymosomes, one type of membranous microvesicles which mediate the transfer of lipids and proteins to spermatozoa plasma membrane during epididymal maturation. Also component of the CD9-positive microvesicles found in the cauda region.

#### Cellular Location

Cytoplasmic vesicle, secretory vesicle, acrosome {ECO:0000250|UniProtKB:Q9DAG6}. Cell membrane {ECO:0000250|UniProtKB:Q9DAG6}; Lipid-anchor, GPI-anchor; Extracellular side {ECO:0000250|UniProtKB:Q9DAG6}. Membrane raft {ECO:0000250|UniProtKB:Q32LB5}. Secreted {ECO:0000250|UniProtKB:Q9DAG6}. Note=Located in the connecting piece of elongated spermatids and sperm. Also located in the apical region of the sperm head after sperm capacitation (By similarity). Weakly attached to the cell membrane and later secreted into the extracellular space (By similarity). Located on sperm equatorial segment and neck (By similarity). Associated with epididymosomes from the caput and cauda epididymis (By similarity). {ECO:0000250|UniProtKB:Q32LB5, ECO:0000250|UniProtKB:Q9DAG6}

#### Tissue Location

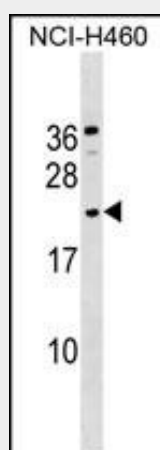
Highly expressed in testis.

### GLIPR1L1 Antibody (C-term) - Protocols

Provided below are standard protocols that you may find useful for product applications.

- [Western Blot](#)
- [Blocking Peptides](#)
- [Dot Blot](#)
- [Immunohistochemistry](#)
- [Immunofluorescence](#)
- [Immunoprecipitation](#)
- [Flow Cytometry](#)
- [Cell Culture](#)

### GLIPR1L1 Antibody (C-term) - Images



GLIPR1L1 Antibody (C-term) (Cat. #AP18024b) western blot analysis in NCI-H460 cell line lysates (35ug/lane). This demonstrates the GLIPR1L1 antibody detected the GLIPR1L1 protein (arrow).

### GLIPR1L1 Antibody (C-term) - Background

The function of this protein remains unknown.

**GLIPR1L1 Antibody (C-term) - References**

Ren, C., et al. Genomics 88(2):163-172(2006)  
Zhang, Z., et al. Protein Sci. 13(10):2819-2824(2004)  
Clark, H.F., et al. Genome Res. 13(10):2265-2270(2003)