

NPNT Antibody (Center)
Affinity Purified Rabbit Polyclonal Antibody (Pab)
Catalog # AP18069c**Specification**

NPNT Antibody (Center) - Product Information

Application	WB,E
Primary Accession	Q6UXI9
Other Accession	NP_001028219.1
Reactivity	Human
Host	Rabbit
Clonality	Polyclonal
Isotype	Rabbit IgG
Calculated MW	61907
Antigen Region	365-392

NPNT Antibody (Center) - Additional Information**Gene ID** 255743**Other Names**

Nephronectin, Preosteoblast EGF-like repeat protein with MAM domain, Protein EGFL6-like, NPNT, EGFL6L, POEM

Target/Specificity

This NPNT antibody is generated from rabbits immunized with a KLH conjugated synthetic peptide between 365-392 amino acids from the Central region of human NPNT.

Dilution

WB~~1:1000

Format

Purified polyclonal antibody supplied in PBS with 0.09% (W/V) sodium azide. This antibody is purified through a protein A column, followed by peptide affinity purification.

Storage

Maintain refrigerated at 2-8°C for up to 2 weeks. For long term storage store at -20°C in small aliquots to prevent freeze-thaw cycles.

Precautions

NPNT Antibody (Center) is for research use only and not for use in diagnostic or therapeutic procedures.

NPNT Antibody (Center) - Protein Information**Name** NPNT**Synonyms** EGFL6L, POEM

Function Functional ligand of integrin alpha-8/beta-1 in kidney development. Regulates the expression of GDNF with integrin alpha- 8/beta-1 which is essential for kidney development. May also play a role in the development and function of various tissues, regulating cell adhesion, spreading and survival through the binding of several integrins (By similarity).

Cellular Location

Secreted, extracellular space, extracellular matrix. Note=Trapped on the cell surface or in the extracellular matrix.

Tissue Location

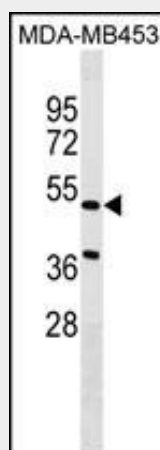
Expressed in kidney and lung and to a lower extent in brain, pregnant uterus, placenta, thyroid gland and blood vessels

NPNT Antibody (Center) - Protocols

Provided below are standard protocols that you may find useful for product applications.

- [Western Blot](#)
- [Blocking Peptides](#)
- [Dot Blot](#)
- [Immunohistochemistry](#)
- [Immunofluorescence](#)
- [Immunoprecipitation](#)
- [Flow Cytometry](#)
- [Cell Culture](#)

NPNT Antibody (Center) - Images



NPNT Antibody (Center) (Cat. #AP18069c) western blot analysis in MDA-MB453 cell line lysates (35ug/lane). This demonstrates the NPNT antibody detected the NPNT protein (arrow).

NPNT Antibody (Center) - Background

Functional ligand of integrin alpha-8/beta-1 in kidney development. Regulates the expression of GDNF with integrin alpha-8/beta-1 which is essential for kidney development. May also play a role in the development and function of various tissues, regulating cell adhesion, spreading and survival through the binding of several integrins (By similarity).

NPNT Antibody (Center) - References

Kalsi, G., et al. Hum. Mol. Genet. 19(12):2497-2506(2010)
Hancock, D.B., et al. Nat. Genet. 42(1):45-52(2010)
Kahai, S., et al. PLoS ONE 4 (10), E7535 (2009) :
Huang, J.T., et al. Int. J. Mol. Med. 15(4):719-724(2005)
Brandenberger, R., et al. J. Cell Biol. 154(2):447-458(2001)