

RG9MTD3 Antibody (Center)
Affinity Purified Rabbit Polyclonal Antibody (Pab)
Catalog # AP18072C**Specification**

RG9MTD3 Antibody (Center) - Product Information

Application	WB,E
Primary Accession	Q6PF06
Other Accession	Q08DP1 , NP_659401.2
Reactivity	Human
Predicted	Bovine
Host	Rabbit
Clonality	Polyclonal
Isotype	Rabbit IgG
Calculated MW	36124
Antigen Region	135-162

RG9MTD3 Antibody (Center) - Additional Information**Gene ID** 158234**Other Names**

tRNA methyltransferase 10 homolog B, 211-, RNA (guanine-9-)-methyltransferase domain-containing protein 3, TRMT10B, RG9MTD3

Target/Specificity

This RG9MTD3 antibody is generated from rabbits immunized with a KLH conjugated synthetic peptide between 135-162 amino acids from the Central region of human RG9MTD3.

Dilution

WB~~1:1000

Format

Purified polyclonal antibody supplied in PBS with 0.09% (W/V) sodium azide. This antibody is purified through a protein A column, followed by peptide affinity purification.

Storage

Maintain refrigerated at 2-8°C for up to 2 weeks. For long term storage store at -20°C in small aliquots to prevent freeze-thaw cycles.

Precautions

RG9MTD3 Antibody (Center) is for research use only and not for use in diagnostic or therapeutic procedures.

RG9MTD3 Antibody (Center) - Protein Information**Name** TRMT10B

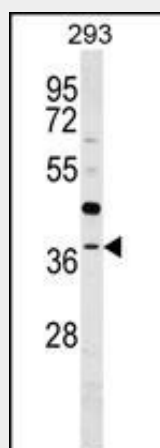
Synonyms RG9MTD3

Function S-adenosyl-L-methionine-dependent guanine N(1)- methyltransferase that catalyzes the formation of N(1)-methylguanine at position 9 (m1G9) in tRNAs (PubMed:[23042678](#)). Probably not able to catalyze formation of N(1)-methyladenine at position 9 (m1A9) in tRNAs (PubMed:[23042678](#)).

RG9MTD3 Antibody (Center) - Protocols

Provided below are standard protocols that you may find useful for product applications.

- [Western Blot](#)
- [Blocking Peptides](#)
- [Dot Blot](#)
- [Immunohistochemistry](#)
- [Immunofluorescence](#)
- [Immunoprecipitation](#)
- [Flow Cytometry](#)
- [Cell Culture](#)

RG9MTD3 Antibody (Center) - Images

RG9MTD3 Antibody (Center) (Cat. #AP18072c) western blot analysis in 293 cell line lysates (35ug/lane). This demonstrates the RG9MTD3 antibody detected the RG9MTD3 protein (arrow).

RG9MTD3 Antibody (Center) - Background

RG9MTD3 is probable RNA methyltransferase (By similarity).

RG9MTD3 Antibody (Center) - References

Lamesch, P., et al. Genomics 89(3):307-315(2007)