

MS4A8B Antibody (N-term)
Affinity Purified Rabbit Polyclonal Antibody (Pab)
Catalog # AP18101a**Specification**

MS4A8B Antibody (N-term) - Product Information

Application	WB,E
Primary Accession	O9BY19
Other Accession	NP_113645.1
Reactivity	Human
Host	Rabbit
Clonality	Polyclonal
Isotype	Rabbit IgG
Calculated MW	26290
Antigen Region	44-70

MS4A8B Antibody (N-term) - Additional Information**Gene ID** 83661**Other Names**

Membrane-spanning 4-domains subfamily A member 8, Four-span transmembrane protein 4, Membrane-spanning 4-domains subfamily A member 8B, MS4A8, 4SPAN4, MS4A8B

Target/Specificity

This MS4A8B antibody is generated from rabbits immunized with a KLH conjugated synthetic peptide between 44-70 amino acids from the N-terminal region of human MS4A8B.

Dilution

WB~~1:1000

Format

Purified polyclonal antibody supplied in PBS with 0.09% (W/V) sodium azide. This antibody is purified through a protein A column, followed by peptide affinity purification.

Storage

Maintain refrigerated at 2-8°C for up to 2 weeks. For long term storage store at -20°C in small aliquots to prevent freeze-thaw cycles.

Precautions

MS4A8B Antibody (N-term) is for research use only and not for use in diagnostic or therapeutic procedures.

MS4A8B Antibody (N-term) - Protein Information**Name** MS4A8**Synonyms** 4SPAN4, MS4A8B

Function May be involved in signal transduction as a component of a multimeric receptor complex.

Cellular Location

Membrane; Multi-pass membrane protein.

Tissue Location

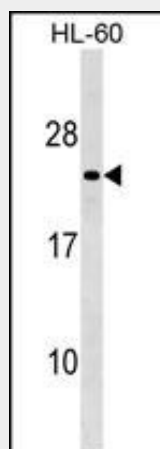
Expressed by hematopoietic tissues and cells lines.

MS4A8B Antibody (N-term) - Protocols

Provided below are standard protocols that you may find useful for product applications.

- [Western Blot](#)
- [Blocking Peptides](#)
- [Dot Blot](#)
- [Immunohistochemistry](#)
- [Immunofluorescence](#)
- [Immunoprecipitation](#)
- [Flow Cytometry](#)
- [Cell Culture](#)

MS4A8B Antibody (N-term) - Images



MS4A8B Antibody (N-term) (Cat. #AP18101a) western blot analysis in HL-60 cell line lysates (35ug/lane). This demonstrates the MS4A8B antibody detected the MS4A8B protein (arrow).

MS4A8B Antibody (N-term) - Background

This gene encodes a member of the membrane-spanning 4A gene family. Members of this protein family are characterized by common structural features and similar intron/exon splice boundaries and display unique expression patterns among hematopoietic cells and nonlymphoid tissues. The gene encoding this protein is localized to 11q12.3, among a cluster of family members.

MS4A8B Antibody (N-term) - References

Lamesch, P., et al. Genomics 89(3):307-315(2007)
Liang, Y., et al. Immunogenetics 53(5):357-368(2001)

Liang, Y., et al. Genomics 72(2):119-127(2001)
Ishibashi, K., et al. Gene 264(1):87-93(2001)